

Hawkins
Motor
Coach, Inc.

OWNER'S MANUAL

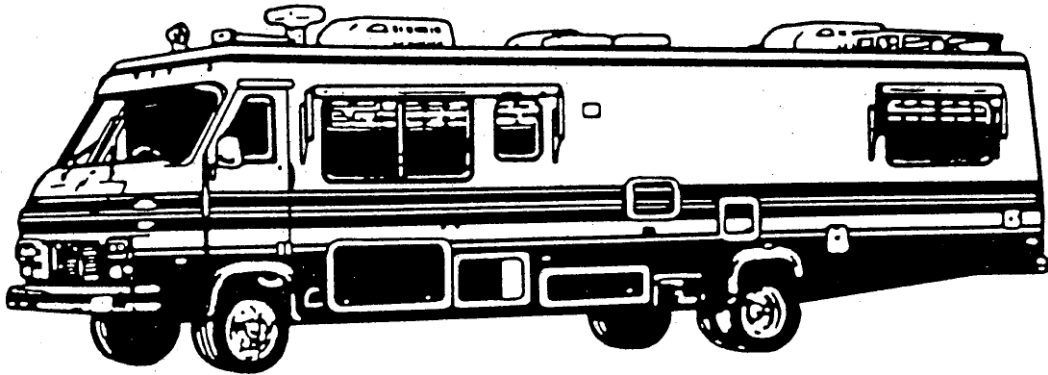


TABLE OF CONTENTS

I.	DELIVERY, WARRANTY & SERVICE INFORMATION	1
A.	Taking Delivery	1
B.	List of Items Furnished Loose	1
C.	Customer Relations	1
D.	Dealer Responsibilities	2
E.	Warranty Explanation	2
F.	Separately Warrantied Products	3
G.	How to Obtain Service and Parts	4
H.	Insurance	4
I.	Canadian and Mexican Insurance	4
II.	SPECIAL SAFETY INFORMATION	5
A.	Safety in Using LP-Gas	5
B.	Electrical System Safety	6
C.	Plumbing System Safety	7
D.	Safety When Traveling	7
E.	Safe Vehicle Loading	7
F.	Safety with Emergency Stopping	7
G.	Emergency Exit	8
H.	Additional Safety Considerations	8
III.	DASH INSTRUMENTATION	9
IV.	FRESH WATER SYSTEM	10
A.	Sanitizing the On-Board Water Storage	10
B.	Filling Your Fresh Water Tank	11
C.	On-Board Water System Operation	11
D.	City Water Supply	12
E.	Water Drains	13
F.	Physical Protection of Interior Water Lines	13
G.	Water Purifier	13
V.	WASTE DRAINAGE SYSTEM	14
A.	Dumping Procedure	14
B.	Cleaning Holding Tanks	15
C.	Disposal Stations	15
VI.	THE L.P. GAS TANK	16
A.	LP-Gas Tank	16
B.	Filling LP-Gas Tank	17
C.	Checking for Leaks	17
D.	Start-up & Operation of LPG Appliances	17
VII.	ELECTRICAL SYSTEMS	18
A.	Automotive Electrical System	18
B.	RV/House Battery	19
C.	110-Volt AC Electrical System	19
D.	Generator/Shore Power Switching	20
E.	12 V.D.C. Fuses and Breakers	20
F.	110 V.A.C. Breakers	21
G.	12 Volt Power Converter	22
H.	Interior Lighting	22
I.	Monitor/Control Panels	22
J.	Solar Panel Battery Charger	22
K.	Generator	22

VIII.	LPG APPLIANCES	25
	A. Water Heaters	25
	B. Furnace	25
	C. Range Top	25
	D. Refrigerator	26
IX.	110 VAC APPLIANCES	28
	A. Microwave/Convection Oven	28
	B. Ice Maker	28
	C. Vacuum	28
	D. Food Center	28
X.	ADDITIONAL EQUIPMENT	29
	A. Electric Entry Step	29
	B. Safe	29
	C. Back-Up Warning	29
	D. Rear View Camera Monitor	29
	E. Remote Control Spot Light	29
	F. Roof Exhaust Fan	29
	G. Smoke Detector	29
	H. L.P. Gas Leak Detector	29
	I. Leveling Jacks	29
	J. Nightstand Courtesy Light Switch	29
	K. TV/Antennae/VCR	29
XI.	SERVICING AND MAINTAINING YOUR RV	30
	A. Chassis Maintenance	30
	B. RV Body	30
	C. Interior Maintenance	31
XII.	WINTERIZATION	32
	A. Cold Weather Operation	32
	B. Winter Freeze Protection	32
	C. Draining the Fresh Water System	32
	D. Preparing Drainage System for Storage	33
	E. Storage During Freezing Weather	33
	F. Storage During Non-Freezing Weather	33
	G. General Storage Notes	33
	H. Chassis Storage Notes	33
	I. Preparation of Engines for Storage	34
	J. Storage For Less Than Thirty Days	34
	K. Storage For More Than Thirty Days	34
	L. Storage Over Ninety Days	35

I. DELIVERY, WARRANTY & SERVICE INFORMATION

A. TAKING DELIVERY

- Your RV is a product which has undergone a series of rigid inspections by highly qualified factory personnel throughout the manufacturing process. Our final factory check by quality control inspectors before shipment to the dealer is not the last one before you take delivery. Your dealer has been trained to perform additional pre-delivery inspections and systems checks, to condition and service your RV, and assist you in understanding and completing warranty forms.

B. LIST OF ITEMS FURNISHED LOOSE

- | | |
|---|--|
| 1. ✓ Owner's Manual | 9. ✓ 3 x 3 Drain hose adapter |
| 2. ✓ Warranties for RV and separately warranted products | 10. ✓ Two sets of keys |
| 3. ✓ Operation and installation manuals, descriptive literature and parts lists (where applicable) for separately warranted products. | 11. ✓ Vacuum hose |
| 4. ✓ Fire extinguisher | 12. ✓ Blender container |
| 5. ✓ Jack and Handle | 13. ✓ Saloon Table Extensions - some models |
| 6. ✓ Lug wrench | 14. ✓ (2) T. V. remote controls |
| 7. ✓ Spare tire | 15. ✓ V.C.R. remote control |
| 8. ✓ Privacy curtains | 16. ✓ Antennae remote control |
| | 17. ✓ Awning wand & stakes |
| | 18. Hose and tire inflator for use with airhorn compressor |

C. CUSTOMER RELATIONS

- We are particularly interested in maintaining the best of customer relations. Only by having your complete confidence and satisfaction with our product and its service can we assure our continued success as manufacturers of recreation vehicles. We have found that continuing a pleasant and effective relationship through our dealers is equally as important as maintaining the technical excellence of our product. Your authorized dealer will cordially assist you in providing service, maintenance, selection of options, and instructions concerning the operation of your vehicle.

Most problems are from misunderstandings concerning warranty and service, and can usually be solved at the dealer level. In case you cannot find satisfaction at the dealer level for any reason, we invite you to contact our factory customer relations department. We will make every effort possible to take actions that meet with your approval. Please understand that in most instances we will eventually refer you back to the local dealer with our recommendations for servicing. In all your contacts with our factory, always refer to your Hawkins Motor Coach serial number for faster results.

HAWKINS MOTOR COACH, INC.
1610 S. Cucamonga Ave.
P. O. Box 3189
Ontario, CA 91761-0981
(714) 947-2512

You have made a sizable investment in the purchase of a Hawkins Motor Coach, and are entitled to all the benefits and services as contained in warranties for your RV and separately warranted products. With your help, we intend to see that you fully receive those benefits and services. It is important that you become familiar with the proper procedures for obtaining service and parts, in and out of warranty. Your dealer is instructed to provide you with orientation in these matters at time of delivery as a supplement to these instructions.

D. DEALER RESPONSIBILITIES

1. Provide the customer with an adequate orientation in the general operation of the RV, use of its containment systems and components, and safety considerations concerning the use of those systems.
2. Insure that the customer receives a complete owner's packet containing warranty cards and various registrations for the RV and separately warranted products.
3. Carefully review all warranty entitlements with the customer, pointing out the importance of mailing warranty cards and various registrations to manufacturers within ten (10) days of taking delivery. Assist the customer in properly completing these forms if he desires. Request that the customer read all warranty information at his earliest convenience and contact the dealer to clear up any provisions which are not understood.
4. Perform pre-delivery inspections as prescribed and provide the customer with a copy of the completed pre-delivery check list and optional check-out form.
5. Inform the customer concerning insurance considerations for his protection.
6. Instruct the customer on how to obtain local and out-of-area service on the RV and its separately warranted products during and after warranty periods.

E. WARRANTY EXPLANATION

This warranty does not extend to damage from neglect, accidents, misuse or failure to follow service and operating instructions, lack of proper maintenance, normal wear and tear, unauthorized repairs, or unauthorized modifications, overloading, or defects in or from equipment not supplied by Hawkins Motor Coach. We do not assume responsibility for loss of use of vehicle, loss of time, inconvenience or expense due to equipment failure.

LIMITED WARRANTY

The Hawkins Motor Coach motor home is an assembly of the following products:

- | | |
|-------------------------------|---------------------------------|
| 1. HVAC Coach Motor Home body | 8. Refrigerator* |
| 2. Chassis | 9. Range* |
| 3. Tire* | 10. Water Heater* |
| 4. Auto Air Conditioner* | 11. Water Pump* |
| 5. Radio* | 12. Generator Power Plant* |
| 6. Oil well Converter* | 13. Roof mount Air Conditioner* |
| 7. Furnace* | |

*Products 2 through 13 are warranted only by their respective manufacturers.

Hawkins Motor Coach warrants to the original retail purchaser of each new Hawkins Motor Coach Motor Home that the motor home body shall be free from defects in material or workmanship for a period of twelve (12) months or 12,000 miles, whichever occurs first after delivery to the original retail customer.

All we require is that you properly operate and maintain your motor home and return it to your selling dealer during normal business hours for any warranty service. If you are traveling or have moved from the area of purchase, or are having difficulty in obtaining warranty service, call "collect" and we will arrange for repairs required under our warranty to be made at an approved recreational vehicle service center.

To the extent allowed by law, this warranty is in place of all other warranties expressed or implied, including any implied warranty of merchantability or fitness. Under this warranty, repair or replacement of the product is the only remedy.

The company does not assume responsibility for loss of use of the vehicle, loss of time, inconvenience, expense of gasoline, telephone, travel, lodging, loss or damage to personal property or loss of revenues.

The company does not assume responsibility to any purchaser of its products for any unauthorized representation or warranty made by dealers selling its products beyond those herein expressed.

Receipt return of the warranty registration card will permit Hawkins Motor Coach to initiate your warranty and see that you obtain the service required under this limited warranty. Completion of the mailing information is optional.

This warranty gives you specific legal rights. You also have implied warranty rights. In the event of a problem with warranty service or performance, you may be able to go to a Small Claims Court, a State Court, and Federal District Court.

Defects in items subject to severe wearing in the camping environment such as carpets, cushion, interior trim and paint, bumpers, etc., should be reported within ninety (90) days, so that they may be properly repaired and not excluded as normal wear and tear.

F. SEPARATELY WARRANTIED PRODUCTS

Hawkins Motor Coach makes every effort to select high quality equipment from reputable manufacturers; however, Hawkins Motor Coach assumes no responsibility or liability for defects in the workmanship or operation of separately warrantied products. These products are usually backed by a nationwide factory authorized service system. Use of other than factory authorized service agencies may void your warranty for their product. Some RV dealers, at the time of need, may not be authorized service centers for certain separately warrantied products, so it will pay you to check with the dealer first to reduce delays. If the dealer is not an authorized service center for the product in question, he will assist you in obtaining authorized services.

Copies of individual product warranties and lists of factory authorized service centers have been included in your owner's packet. Separately warrantied products will not be serviced, repaired, or replaced by this company. It must be understood that in order to obtain repairs or replacement of these items, the individual manufacturer's warranty cards must be submitted within ten (10) days of date of purchase.

If service or parts are required for these products, refer to the furnished list of factory authorized service centers. If the list is not available for the particular product, write or call the manufacturer concerned to obtain the location of the nearest authorized service center.

G. HOW TO OBTAIN SERVICE AND PARTS

Contact your selling dealer during normal business hours for any warranty service. If you are traveling or have moved from the area of purchase, or are having difficulties in obtaining warranty service, call Hawkins Motor Coach collect and we will arrange for repairs under our warranty to be made at an approved recreation vehicle service center.

Please keep all operator's and owner's manuals, service center lists, warranty stubs, parts lists and other related documents in the RV for handy reference. All records for maintenance and service should be kept current and filed for ready access.

H. INSURANCE

As with an automobile, it is important that you protect yourself and others with insurance coverages for personal liability, theft, collision, property damage, etc. Your dealer and/or auto insurance agent will assist you in obtaining appropriate insurance for your protection. There are numerous reliable insurance companies that specialize in providing insurance for recreation vehicles. It may pay to check with the company that now provides your automobile insurance. Many times, adequate recreation vehicle insurance may also be obtained as a rider to your automobile policy at considerable savings. Do not put off insuring yourself for RV coverage.

I. CANADIAN AND MEXICAN INSURANCE

Insurance for travel in Canada can usually be covered by your present U.S. policy for the recreational vehicle, often at no extra cost. Consult your individual insurance company for procedures and be sure of your coverage before leaving the United States.

Insurance for travel in Mexico is not generally available through U.S. insurance companies and is usually purchased through a Mexican company, prior to crossing the border.

II. SPECIAL SAFETY INFORMATION

A. SAFETY IN USING LP-GAS

You should check for leaks at the connection on the LP-gas system soon after purchase and initial filling of LP-gas tank. Even though the manufacturer and dealer have already made tests for leakage, periodic checks are advisable because of the vibration encountered during travel.

An L.P. gas leak detector is installed in the galley base to alert you to stray L.P. gas (12 v. cut-off switch must be on at all times coach is in use in order to power L.P.G. detector. Turn off when stored.)

Your vehicle was manufactured to provide you with full access to all gas line connections. Leaks can be found easily with a soapy water solution applied to the outside of the gas piping connections. If bubbles form, a leak exists. Shut off the main gas valve at the LP-gas tank if a leak is detected. LP-gas is heavier than air. Leaking gas tends to flow to low places, same as water. Never light a match or allow any open flame if leaking gas is suspected.

Be sure to shut off the main LP-gas supply valve when the vehicle is not in use. This gas piping system is designed for use of liquefied petroleum gas only. **DO NOT CONNECT NATURAL GAS TO THIS SYSTEM.**

WARNING: All pilot lights and appliances shall be turned off during refueling of motor fuel tanks and/or LP-gas containers. The LP tank is equipped with an automatic stop fill device for additional protection. Do not attempt to override its operation. Follow the instructions on the device and if problems arise, contact your local dealer.

Warning at LP-Gas tank

LP-GAS

THIS GAS PIPING SYSTEM IS DESIGNED FOR USE OF LIQUEFIED PETROLEUM GAS ONLY. DO NOT CONNECT NATURAL GAS TO THIS SYSTEM

Securely cap inlet(s) when not connected for use. After turning on gas except after normal container replacement, test gas piping and connections to appliances for leakage with soapy water or bubble solution. Do not use products that contain ammonia or chlorine.

07

Do Not Fill LP-Gas Container(s) to More Than 80% of Capacity

15

Warning at stove top

WARNING:

IT IS NOT SAFE TO USE COOKING APPLIANCES FOR COMFORT HEATING

Cooking appliances need fresh air for safe operation. Before operation:

1. Open overhead vent or turn on exhaust fan and;
2. Open Window.

08

Warning at vehicle fuel fill

WARNING: ALL PILOT LIGHTS AND APPLIANCES SHALL BE TURNED OFF DURING REFUELING OF MOTOR FUEL TANKS AND/OR LP-GAS CONTAINERS.

09

B. ELECTRICAL SYSTEM SAFETY

As delivered, your coach's electrical system has been engineered and checked for performance and safety. Circuit breakers and fuses are installed to protect electrical circuits from overloading. Do not make unauthorized changes to circuitry or add on fixed appliances yourself. If alterations are required, consult your dealer and he will assist you in obtaining a safe installation.

An approved power supply cord is supplied with the vehicle for hook-up to a 120 volt source. Note that the cord has a four-pin plug which provides proper grounding through the fourth (round) pin. Grounding is your personal protection from electrical shock...do not use any adapter or extension cord that will break the continuity of the grounding circuit connected to that fourth pin. Never connect to a non-grounded receptacle.

Never operate your RV's 120 volt system with an inadequate ground. If you feel a shock - even a small one - from the RV while standing on the ground, you should immediately disconnect the RV and locate the trouble. Ground continuity should be continuous from any electrical appliance or the vehicle frame to the distribution panelboards through the fourth pin on the power supply cord and thence to the park receptacle and earth ground.

Label at electrical entrance:

This connection is
for 110-125-volt AC,
60-Hz
50 AMP Supply

C. PLUMBING SYSTEM SAFETY

1. Sanitize the fresh water supply system periodically (see sanitizing instructions). Section 111 A.
2. Try to keep water connection fittings from coming in contact with the ground or drain hose to reduce chances of contamination.
3. Always rinse the sewer drain hose before storing.

D. SAFETY WHEN TRAVELING

Your motor home was designed to be open and spacious. While this provided delightful aspects to traveling, it also requires additional safety awareness. All loose objects are potentially dangerous missiles in the event of sudden stops and maneuvers. To eliminate this hazard, all appliances, closets, drawers, and cabinet doors are provided with positive latches and all seats designed for occupancy while the coach is in motion are equipped with seat belts.

1. Prior to each start, check all open areas to see that gear has been properly stowed.
2. Check all appliances, door, and drawers for proper locking of latches.
3. All passengers should take their seats. Fasten the seat belt by engaging the buckle and adjust the belt (by pulling excess through clamping mechanism at each side of the buckle halves) so that the belt is snug and buckle is located for your comfort and easy access.

E. SAFE VEHICLE LOADING

Your motor home is labeled in accordance with federal regulations to indicate the safe limits to which each axle and the total vehicle may be loaded. It is recommended that you have your vehicle weighed at a public scale with full fuel, water and LP-gas tanks and any equipment, appliances and utensils normally carried. Subtract the indicated weight from the GVWR printed on the certification label to find the maximum additional load that can safely be carried.

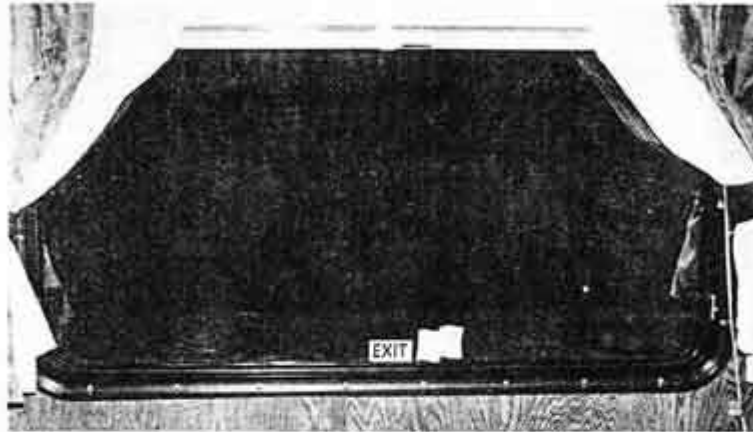
When loading your vehicle, always place heavy items low in the coach and lighter items in overhead cabinets. Avoid heavy loads in the extreme rear of the vehicle.

F. SAFETY WITH EMERGENCY STOPPING

Always carry road flares and/or reflective triangular highway warning devices that can be displayed when necessary. Pull off the roadway as far as possible when changing flats or for other emergency situations. Turn on the vehicular hazard warning flashers when parked alongside a roadway. Get passengers out of the RV and have them stand clear of the vehicle area when parked on the edge of a highway.

G. EMERGENCY EXIT

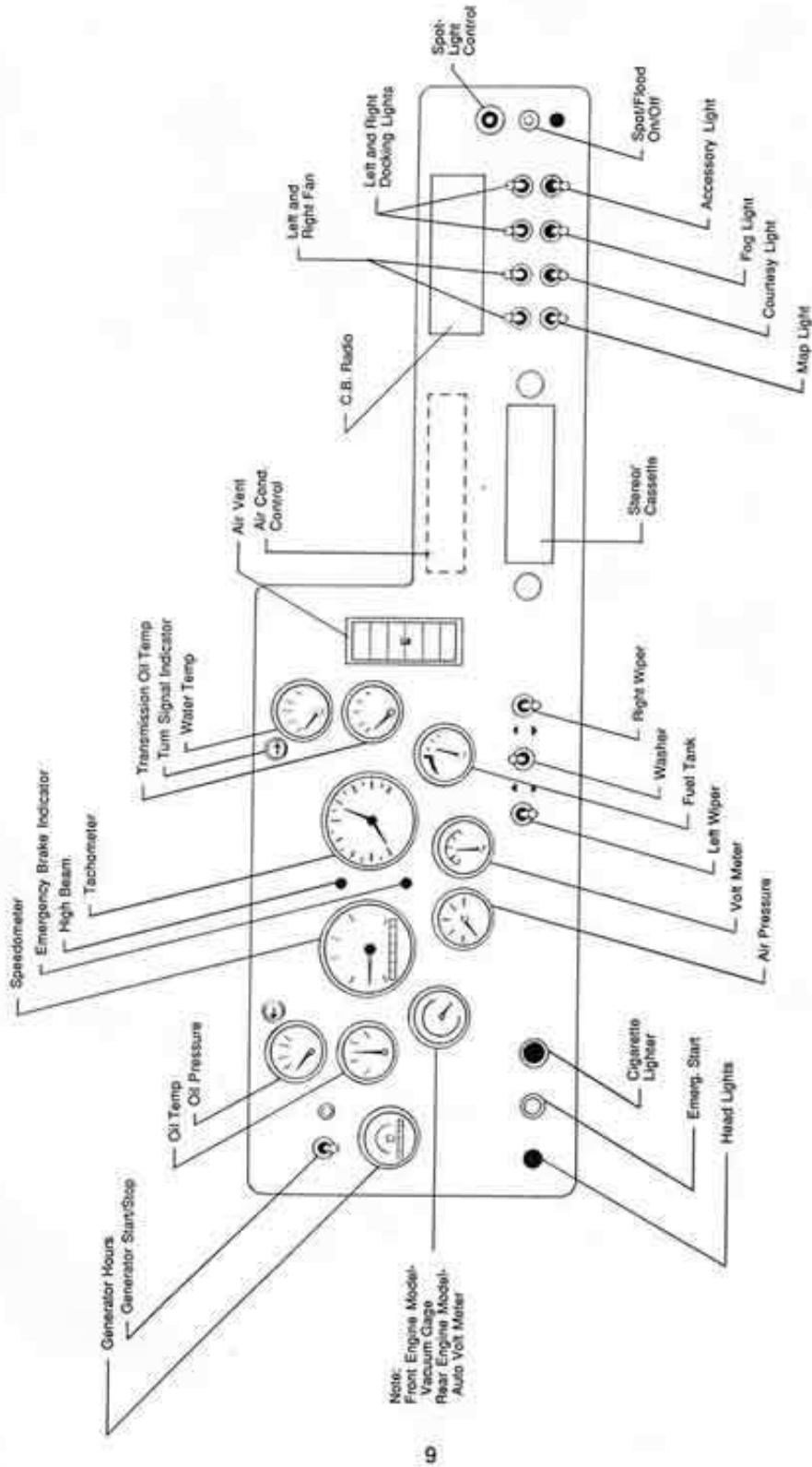
Selected doors and windows have been designated as exits in case of emergency. They are marked with an exit label and the latches on the windows are red. Learn where they are located so that in case of an emergency you can choose the shortest route to exit.



H. ADDITIONAL SAFETY CONSIDERATIONS

1. Never attempt to fix gas or electrical appliances yourself. Enlist the services of a qualified technician.
2. Always have a serviceable fire extinguisher placed in an easily accessible location. This extinguisher should have a rating of at least four BC units.
3. Insure that tires are in good condition and properly inflated. Especially watch inflation of dual wheels - under-inflated tires get hot and are more apt to fail.
4. **CHECK AND TIGHTEN WHEEL LUGS AFTER THE FIRST 500 MILES AND EVERY 1,000 MILES THEREAFTER.**
5. Check brakes in a safe area - not while traveling a busy highway.
6. Disconnect television power cord and antenna lead-in during thunder storms and lightning activity.
7. Have wheel bearings cleaned and packed as specified in your chassis owner's manual.
8. Observe the warning labels attached to your vehicle concerning LP-gas, water, electricity, heating and seating positions.

III. DASH INSTRUMENTATION



IV. FRESH WATER SYSTEM

Fresh water in your Hawkins Motor Coach motor home is supplied either through the onboard water storage tank system or directly from an outside city water connection. Care should be exercised to assure that only fresh, potable water is used through both sources.

A. SANITIZING THE ON-BOARD WATER STORAGE

Sanitize the on-board water storage system upon first delivery, after long periods of non-use, and after any suspected contamination. There are various commercial solutions approved for RV use available to assist you in sanitizing the system. One sanitizing procedure is as follows:

1. Prepare a chlorine solution using one gallon of water and 1/4 cup of household bleach (5% sodium hypochlorite solution). With tank empty, pour one gallon of solution into the tank for each 15 gallons of tank capacity.
2. Complete filling of tank with fresh water. Open faucets to release air. Pressurize system with pump until water flows. Turn off pump.
3. Allow to stand for three hours.
4. Drain the entire system including the water heater. See instructions on "Water Drains."
5. Flush the system with fresh water and drain. All plumbing lines and the water heater may be flushed through the outside city water connection.
6. To remove excessive chlorine taste or odor which may remain, prepare a solution of one quart vinegar to five gallons of water and allow solution to agitate in tank by vehicle motion (several days, if possible).
7. Drain tank and again flush with potable fresh water.

WARNING: POTABLE WATER
ONLY. SANITIZE, FLUSH
AND DRAIN BEFORE USING.
SEE INSTRUCTION MANUAL.

10

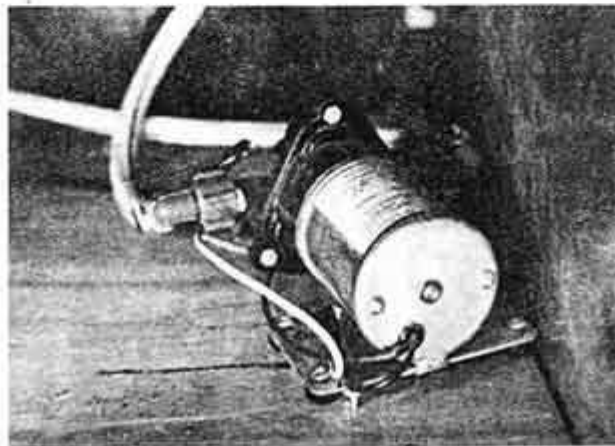
B. FILLING YOUR FRESH WATER TANK

Fill your water tank only with fresh (potable) water. Wash down the area around the fill before removing the cap. When water spills out from the water tank vent, the tank is filled.



C. ON-BOARD WATER SYSTEM OPERATION

After the water tank has been filled, water through all the plumbing fixtures is fed by an electric water pump. Once the water pump switch at the monitor panel or lavatory face is turned on, the water pump is totally automatic and self-priming, operating on demand when any fixture is turned on.

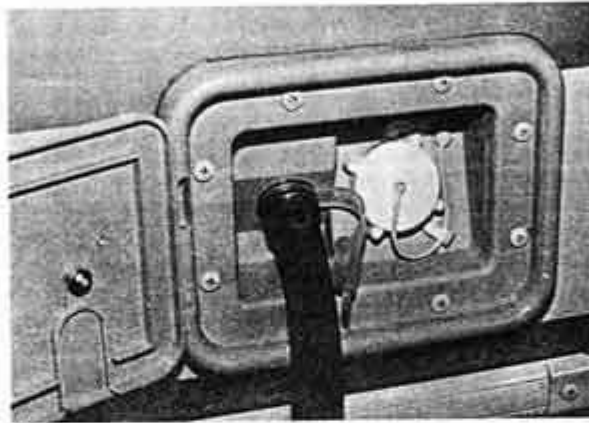


When the pump is first turned on upon delivery or after the system has been drained, purge all air from the pipe lines and water heater by turning on all plumbing fixtures. Be sure to purge the system of trapped air before lighting up the water heater. After the system has been purged, turn off all fixtures. The water pump should automatically switch off when all fixtures are turned off. If the pump switches on and off when you are not using any water, inspect your water system for leaks.

Turn pump switch off when the system is not in use or the vehicle is unattended. Do not permit pump to operate when water tank is empty or when the motor home is not in use.

D. CITY WATER SUPPLY

Connect a flexible hose with 3/4" fittings to the city water service and the RV water inlet fitting. Turn on the city water and you will receive pressure to the vehicle's water system.



CAUTION

Excessive pressures from water supply systems may be encountered in some parks, especially in mountain regions. Water pressure regulators are available to protect your system against high pressure.

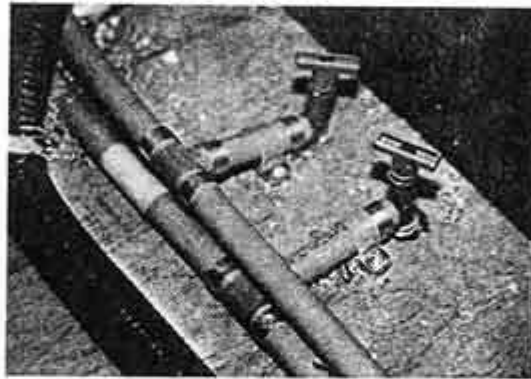
There is no need to turn on the water pump when your motor home is connected to a city water supply.

E. WATER DRAINS

Water system drains are located at the floor of the motor home (various locations for different models) so that water lines may be drained of water for sanitizing, storage, or winterization. The water heater has a separate drain built in (see Manufacturer's instructions).

When it becomes necessary to drain the system, the following instructions are recommended.

1. Level your motor home.
2. Make certain that the LP-gas system has been turned off (water heater).
3. Turn on all faucets inside the motor home.
4. Open the drains for the hot and cold water lines.
5. Open the drain for the water tank found near the tank and inside the motor home. Be sure the vent and fill for the water tank are clear, so the system is properly vented for faster draining.
6. After the system has completely drained, check all interior fixtures including the toilet flush valve for trapped water. Turn on the water pump for a few seconds to clear the pump of water.
7. Turn off all drain valves and plumbing fixtures when the system is completely drained.



F. PHYSICAL PROTECTION OF INTERIOR WATER LINES

Be careful not to store heavy items such as canned goods, tools, etc., in areas where they may come in contact with water piping and cause damage due to road vibration and shifting of the load.

G. WATER PURIFIER

The water purification system provides equipment and instructions needed to disinfect and filter your drinking water.

A fresh replacement cartridge is needed when the faucet's water flow becomes too slow for convenience. At least one replacement a year is recommended.

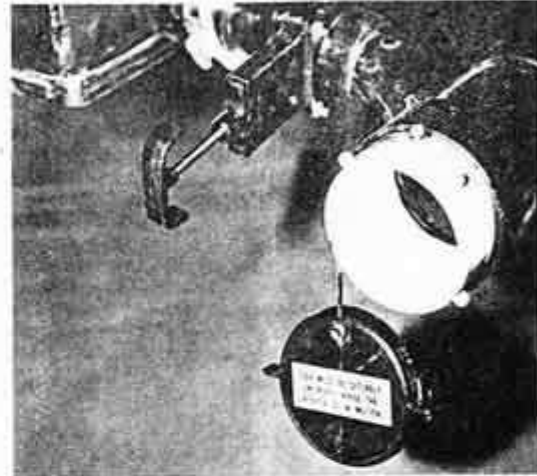
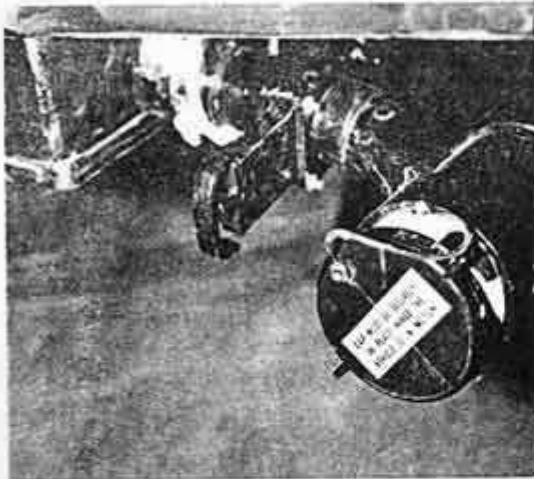
Read the filter's owner's guide for chlorination and further maintenance instructions.

V. WASTE DRAINAGE SYSTEM

Your waste drainage system was designed to provide adequate, safe storage and disposal for liquid wastes. Two waste holding tanks are provided. The solid waste tank, located directly beneath the toilet, holds the toilet waste. The gray water tank holds waste from your sink, lavatory and shower.

Waste holding tanks should only be dumped at a waste disposal station, or sanitary sewer connection.

All dump or termination valves should be closed and the sewer cap securely in place when the vehicle is in motion.



A. DUMPING PROCEDURE

Vehicle movement helps to liquify and suspend the solids for easier dumping of wastes. For this reason, when possible, it is always better to dump soon after road travel rather than before road travel. To drain the holding tanks, the following procedures are suggested:

1. Be certain that both termination valves are closed.
2. Remove the sewer drain cap.
3. Securely attach sewer adaptor and drain hose to the drain outlet. Be certain that the host is securely attached to the adaptor.
4. Insert hose outlet into the sewer inlet.
5. Open the solid waste termination valve in a slow continuous motion. A sudden jerk could cause the liquid to gush through and pull the hose out of the disposal inlet.
6. Close the solid waste termination valve after draining.
7. Open the gray water termination valve and allow tank to drain.
8. Close the gray water tank termination valve.

B. FILLING LP-GAS TANK

Before filling your LP-gas tank, turn off all pilot lights and close the main tank valve. Filling should be done only by an authorized LP-gas dealer.

Advise your dealer that your tank is equipped with an automatic stop fill device and cannot be overfilled. A safety relief valve found on all tanks will discharge liquid LP-gas if the pressure in the tank exceeds the limits. Keep all open flames and cigarettes away from this area. As the outside temperature rises, the liquid LP-gas expands with an increase in tank pressure which could cause LP-gas to discharge through the safety relief valve.

When LP-gas tanks are filled to the proper level, a safe expansion space remains for the LP-gas. This assures vapor LP-gas withdrawal through the gas piping system.

C. CHECKING FOR LEAKS

Upon delivery and periodically thereafter, check your gas system for possible leaks. Although the entire distribution system and its attached appliances have undergone extensive factory testing for leaks, connections and fittings can develop leaks due to road vibrations. Usually you can detect these leaks by their strong garlic-like odor, turn off all open flames immediately and commence a systematic search for leaks throughout the gas system. Use a bubble solution or soapy water - **NEVER A MATCH**. On connections and fittings, use two wrenches with opposing torque to prevent twisting of copper tubing. If the leak does not show up in the manifold or copper tubing distribution system, then check the appliances.

If at this time the odor still persists, turn off the main valve at the LP-gas tank and all appliance pilots. Check with your LP-gas dealer or your authorized Hawkins Motor Coach dealer for professional help.

D. START-UP AND OPERATION OF LPG APPLIANCES

Check to be sure all appliance control valves are in the off position. Familiarize yourself with the operation of each gas-fired appliance with the instruction manuals provided. When all appliances are turned off, including their pilots, the LP-gas system is ready for use. Turn the main valve to full open to supply gas to each appliance. Each appliance can now be lit. For initial lighting of the LP-gas appliances, air in the lines must first be purged before any gas will flow through the burners. Hold a flame near the range burner while the air is being purged. After a few seconds, all the air will have been cleared and gas will ignite and burn. The other appliances are equipped with automatic ignition system and should light themselves when activated.

VI. ELECTRICAL SYSTEMS

Your motor home is equipped with (3) basic electrical power systems to meet your RV electrical needs.

1. A 12-volt DC converter supplied.
2. A 12-volt DC Battery supplied.
3. A 110-volt AC supplied from an external source or from the on-board generator (optional on some models).

A. AUTOMOTIVE ELECTRICAL SYSTEM

The following equipment is powered from the automotive electrical system:

- | | |
|--|---------------------------|
| 1. Headlamps | 9. Electrical dash gauges |
| 2. Turn indicators/Hazard warning lights | 10. Starter motor |
| 3. Instrument panel lights | 11. Dash air conditioner |
| 4. Windshield wipers & washers | 12. Cruise Control |
| 5. Engine ignition system | 13. Power step |
| 6. Automotive heater fans | 14. Cab lighting |
| 7. Clearance lamps | 15. Horns |
| 8. License & back-up lights | |

EMERGENCY START SWITCH

The switch on the dash (see Fig. A1), when activated, connects the RV/house battery to the engine battery for additional power to start the engine. It will also assist in starting the generator.

Fuses are located below dash on the fire wall near driver's door (Fig. A2).

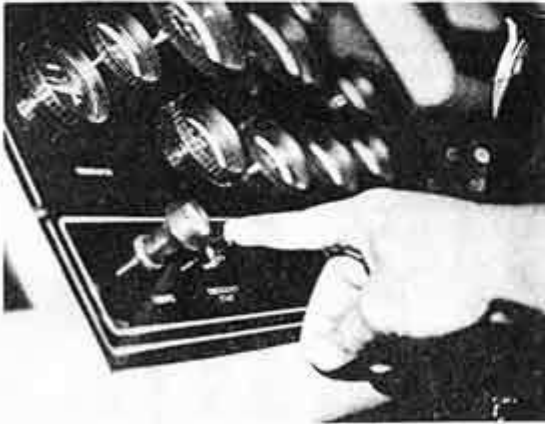


Fig. A1

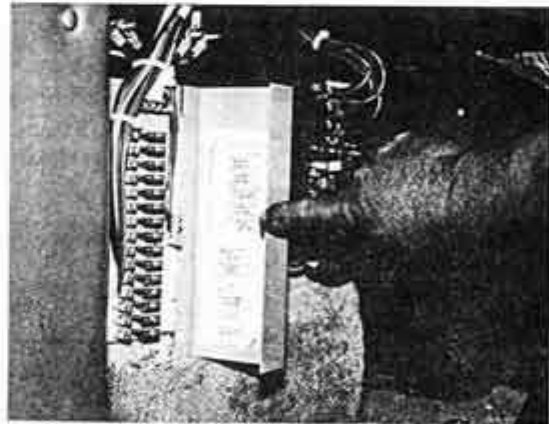


Fig. A2

B. RV/HOUSE BATTERY (12-VOLT D.C.)

The RV/house battery is located in a battery box (Fig. B1) under the floor at the entry door with an access door at the entry step; or, on basement and rear engine coaches, on a pull-out battery rack behind access door on sides of coach (Fig. B2).

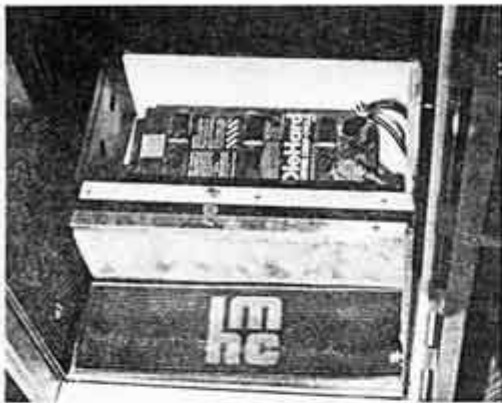


Fig. B1

A 12-volt cut-off switch for the RV/house battery is located adjacent to the entry step, providing easy disconnection and preventing unwanted or accidental power drainage (Fig. B3).

The following equipment is powered by the RV/house battery:

- | | |
|------------------------|---------------------|
| 1. Cigarette lighter | 5. Electric windows |
| 2. Courtesy lights | 6. Aux. dash fans |
| 3. Side docking lights | 7. Spot light |
| 4. In dash radios | |



Fig. B3

All interior lights, furnace motor, exhaust fans, water pump and optional electrical equipment operate on 12-Volt DC provided by your RV/house battery and the power converter when connected to 110V power or generator. Battery power makes possible the independent operation of your motorhome but is limited by the power reserves stored in your battery.

Battery charging is done automatically through the vehicle's alternator when traveling. The house battery is also charged through the power converter when connected to 110V power. Charging the battery produces hydrogen which is explosive when mixed with air. Do not disconnect the battery cables or produce a spark by any means close to the battery while it is charging. Be sure to check the liquid level regularly and when adding water use distilled water to promote longer battery life.

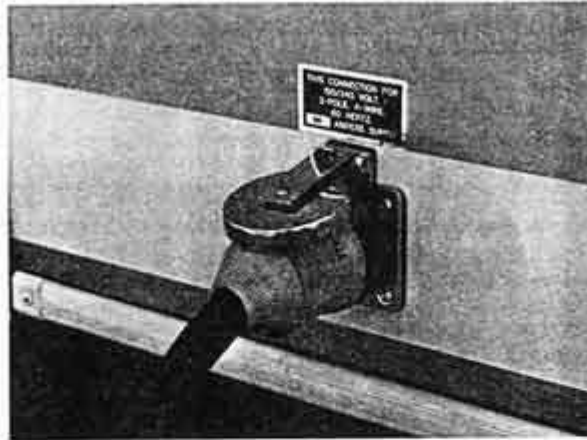
C. 110-VOLT AC ELECTRICAL SYSTEM

110-volt AC power is available in your motorhome when you are plugged into a 110-volt power outlet or when your generator is operating.

Your motorhome is equipped with a four pronged power supply cord which is stored in an exterior compartment near the coaches power inlet receptacle. When cord is connected to receptacle (see Fig. C1) and plugged into an outside power source, both the 110-volt AC outlets and all interior 12-volt light & equipment circuits become energized.

The 12-volt power convertor automatically recharges the auxiliary RV battery.

Fig. C1



D. GENERATOR/SHORE POWER SWITCHING

HMC coaches are equipped with an automatic power transfer switch (see Fig. F1) which prevents the 110-volt electrical system from being energized by more than one source. When your generator is in operation it will override shore power, when generator is not running the automatic switch will return to shore power when it is connected.

E. 12 V.D.C. FUSES AND BREAKERS

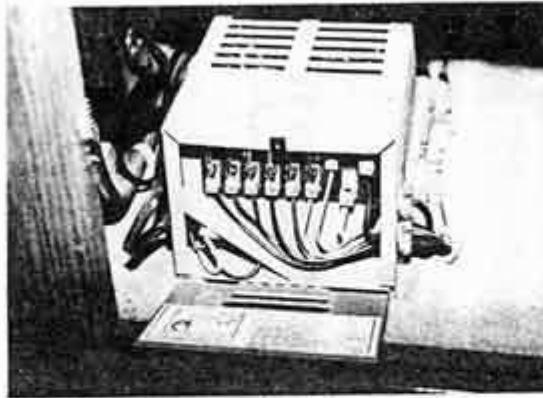
Your Hawkins Motor Coach motorhome is fused to protect all 12-volt DC circuits. Your vehicle alternator is connected to a battery isolator which enables both the vehicle and the RV auxiliary batteries to be charged and yet isolate the main vehicle battery from the auxiliary battery. This reserves the vehicle battery to be used only for automotive purposes.

The line from the RV/house battery to the power converter and 12-volt fuse panel is protected by a 40 amp circuit breaker. Another 30 amp circuit breaker feeds the refrigerator directly and a third 20 amp circuit breaker feeds the monitor panel and T.V. set(s) in some models. The fuse panel (Fig. E1) located in the power converter protects all interior lighting, and equipment circuits. If any fuse blows, replace with the same size fuse. The circuit breakers are automatic and will reset themselves.



The power converter can be found mounted on the floor behind a grilled door, generally below your refrigerator, wardrobe or cooktop.

Fig. E1



F. 110 V.A.C. BREAKERS

Circuit breakers are used to protect the 110-volt AC wiring in your motorhome. They are in the 110-volt AC distribution panel located in the left sofa overhead. Become familiar with its location. If a circuit breaker should open a circuit, locate and remove the cause for overload and then reset the breaker.

Ground fault circuit interrupters (GFCI) designed to protect people from shock hazards, are used in motorhomes with 110-volt receptacles inside bath compartments and exterior receptacles. This device is not a substitute for proper grounding of your vehicle. Test the device regularly as prescribed on the receptacle.

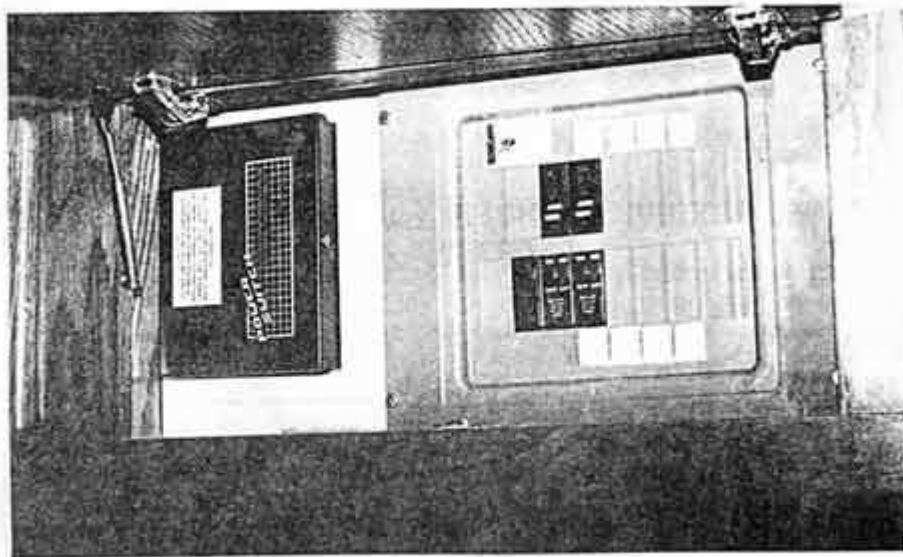


Fig. F1

G. 12 VOLT POWER CONVERTER

When your coach is connected to an outside 110-volt AC power source or to the on-board generator, the 12-V converter (Fig. E1) provides energy to all interior lights, fans, motors, and water pump. The converter housing itself will become warm from use; therefore, do not use area near the converter for storage and allow space for air circulation and fire safety. A slight buzzing noise may be heard from the battery charger when operating.

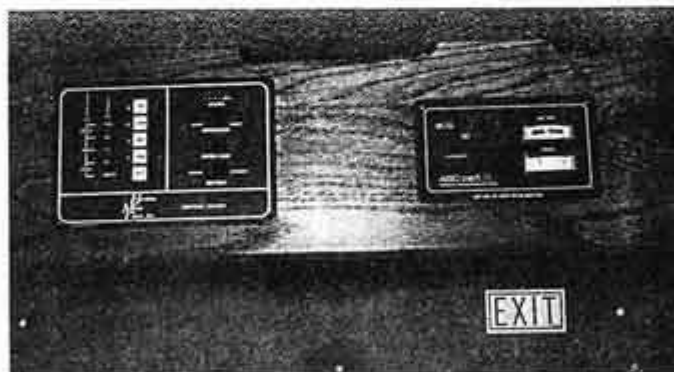
H. INTERIOR LIGHTING

All interior lights operate only on 12-volt DC. When the light bulbs burn out, replace with the same bulb. Each bulb is identified by a number on the base and are automotive type, bayonet socket bulbs or slim line fluorescent tubes will have to be purchased from an RV dealer or supply store.

I. MONITOR/CONTROL PANELS

Your monitor control panel, located above the entry door (Fig. I1), is designed to provide instant systems information at your fingertips. It monitors your fresh water supply, your grey and solid waste holding tank fill level, automotive and house battery charge condition, and the LPG tank liquid level. A water pump on/off switch and a generator start/stop switch with hour meter are also provided.

Fig. I1



J. SOLAR PANEL BATTERY CHARGER

The solar panel battery charger uses sunlight to maintain your batteries when not in use. The charge controller panel is mounted over the entry door next to the monitor panel (Fig. I1). Because it is self-regulating, all you need to do is clean your panel monthly.

K. GENERATOR

A comprehensive set of instructions on the operation, care and maintenance of the generator set (Fig. K1) is supplied with each vehicle equipped with a generator. Read these instructions before attempting any servicing of this equipment. An hour meter at the generator control switch makes it convenient to log the number of hours that the generator has run so routine servicing can be scheduled.

General safety precautions — A generator set, like any other electromechanical device, can pose potential dangers to life and limb if improperly maintained or imprudently operated. The best safeguards against accidents are to be ever mindful of the potential dangers and to always use good common sense. In the interest of safety, some general precautions relating to operation of an RV generator set are presented below. Keep these in mind!

WARNING LETHAL EXHAUST GAS!

An engine discharges deadly carbon monoxide as part of the exhaust when operating. Carbon monoxide is particularly dangerous in that it is an odorless, tasteless, and non-irritating gas but be ever mindful that it can cause death if inhaled for even a short period of time. Have only thoroughly qualified specialists install and replace exhaust system components and have the system inspected frequently. Be careful when parking your RV to avoid obstructing the exhaust outlet. The exhaust gases must discharge freely otherwise carbon monoxide may deflect under and into the vehicle or enter through open doors, windows, or vents. Also make sure that your exhaust cannot be discharged toward neighboring RV's campers or any occupied building. Be especially watchful for exhaust accumulation under calm, windless conditions.

WARNING - HIGH VOLTAGE!

Remember that the function of a generator set is to produce electricity and that wherever electricity is present, there is the potential danger of electrocution. Take the same precautions with electrical appliances in your RV that you would observe in your home. Keep away from electrical circuits and wiring while the set is running and have electrical service performed only by qualified electricians. Make sure unqualified persons, especially children, cannot gain access to your set. Keep the compartment door locked or securely latched at all times. Never touch electrical leads or appliances with wet hands or when standing in water or on wet ground as the chance of electrocution is especially prevalent under such conditions.

GENERAL PRECAUTIONS!

Keep the compartment and generator set clean and free of debris to minimize chances of fire. Also remember that hot exhaust gases and exhaust system parts could start grass fires. Keep away from hot engine and generator parts to avoid burning yourself.

Operation instructions — To insure continued satisfactory operation, the following items should be checked before each start up:

Prestart Checklist:

Oil Level:	Should be at or near the Full mark.
Air Inlets:	Must be clear and unobstructed.
Compartment:	Interior must be clean.
Air Cleaner:	Must be clean and properly installed.
Air Shrouding:	Must be tight and proper position.
Exhaust:	Tail pipe must be clear, muffler and piping tight and in good condition.

Generator remote start/stop switches and hour meters are provided on the dashboard and are also included in the monitor panel above the entry door.

Starting-Stopping Procedure - Move the Start-Stop switch into the Start position and hold in this position until the engine is running, then release. Normally, the engine will start within five seconds; however, if it fails to start within five seconds; however, if it fails to start after cranking the ten seconds release switch, then wait a few seconds before activating the start switch again. This procedure will allow the automatic choke to reset in the full choke position. Whenever possible, allow a brief cooling period by running the set at low or no load for a few minutes just

prior to shutdown. To stop, move the switch into the stop position and hold until the set comes to a complete halt.

If your generator runs out of fuel, replenish the fuel supply, then activate the Start switch at ten-second intervals to pump gasoline back into the system and allow starting on full choke when the system is refilled.

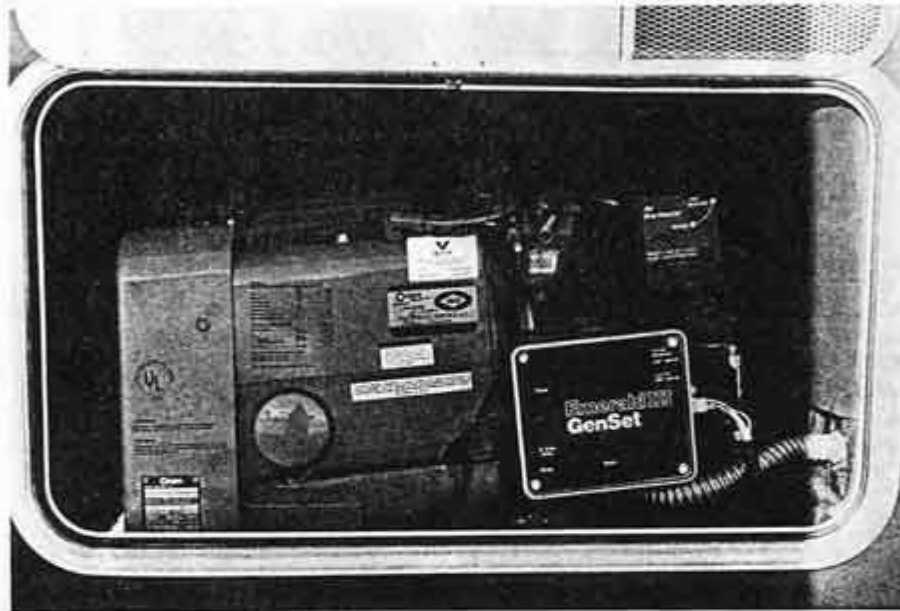


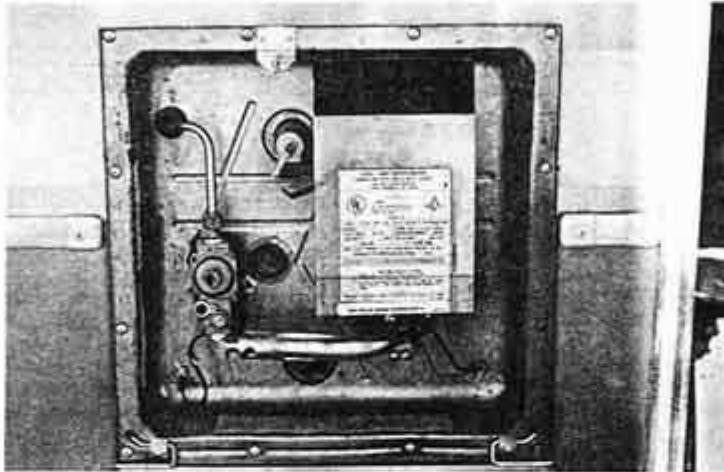
Fig. K1

VIII. LPG APPLIANCES

Your LP-gas appliances come equipped with lighting procedures on a label permanently attached. For further information, please refer to the specific manufacturer's manual included in your warranty package.

A. WATER HEATERS

Do not light the water heater until it has been filled with water and any air purged. The water heater on/off switch is on the galley face. Refer to self igniting water heater operating instruction.



B. FURNACE

Refer to operating instructions on self-igniting furnace.

C. RANGE TOP

The pilot assembly has been turned off. If you wish to use the pilot, hold a match at the pilot and slowly open the valve by turning the screw on top of the pilot valve.



D. REFRIGERATORS — Operating and maintenance instructions are furnished with your refrigerator. Read the instructions before using your refrigerator.

1. START UP

When going on a trip, plug in your vehicle's power cord at home and operate refrigerator on 110V (or LP-gas if desired) for about 6 hours before leaving. Your refrigerator will then be cold before you start your journey. Your refrigerator is equipped with automatic switching, which will select the most economical power source available. Ignition is also automatic.

2. ICE MAKING

For rapid ice production, set the temperature control knob at "coldest" position. When ice has been produced, turn the temperature control knob to the normal operating position, otherwise food in the cabinet may become frozen. Ice cubes take some time to form and it is advisable to keep the ice tray full and ready for immediate use.

When storing frozen foods in the freezer section, the temperature control knob should be positioned at or near "coldest" setting position depending on such factors as outside temperature and frequency of the door being opened.

3. CLEANING

It is a good practice to clean the cabinet interior and other parts at regular intervals, preferably when defrosting. Remove all stored foods. Wash the ice cube trays, shelves and vegetable bin. Also, clean around the evaporator door frame and door gasket. Rinsing with a solution of baking soda and water is recommended. Finish wiping with a soft dry cloth. Leave the refrigerator door slightly open when not in use to prevent mildew from growing.

4. MAINTENANCE INSTRUCTIONS

Trouble Shooting

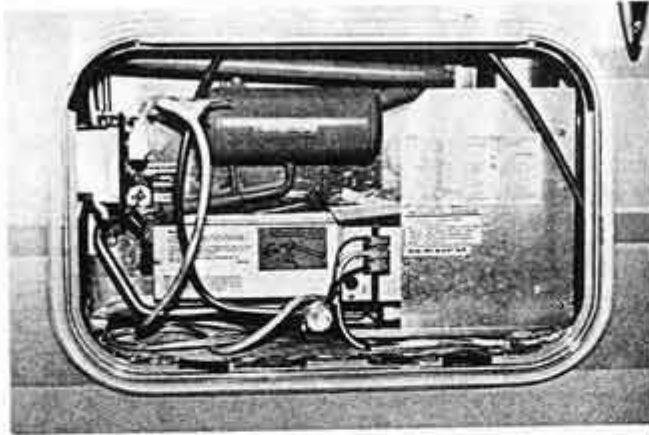
If your refrigerator is not working properly, check the trouble-shooting hints in your refrigerator manual. If your refrigerator still fails to operate, turn it off at the on/off switch and contact your dealer immediately, giving him the model number and serial number shown on the nameplate and complete details of the problem.

IMPORTANT: Repair of your refrigerator must be performed by an authorized service point or your selling dealer. Tampering with any part of the refrigerator by unauthorized personnel will automatically void the warranty.

IMPORTANT

The refrigerator must be inspected periodically and before reuse after shut-down.

1. Check all gas connections for possible leaks using a solution of soap and water. (Do not use a lighted match.)
2. Inspect the flame for color. It should be a sharp blue, not yellow, check for a high and low flame. This can only be observed after several hours operation.
3. Check the interior of the flue tube for possible soot deposit. See refrigerator Manufacturers Instruction.



IX. 110 VAC APPLIANCES

Some appliances can only be operated on 110 power. They can be used when connected to external power (shore power) or when connected to the Aux generator.

- A. Microwave/Convection oven
Refer to operating instructions
- B. Ice Maker
Refer to operating instructions
- C. Vacuum
Refer to operating instructions
- D. Food Center
This is a food processing center and we only supply the blender attachment. For additional attachments and instructions, refer to operating instructions.

X. ADDITIONAL EQUIPMENT

- A. Electric Entry Step - The step at your entry door will extend when the entry door is open. It will retract when the door is shut.
- B. Safe - Located in driver's deck floor, see bottom of access lid for operating instructions.
- C. Back-Up Warning - Anytime the transmission is put into reverse, a horn will beep intermittently.
- D. Rear View Camera Monitor - This feature will assist you not only in backing up, but in connecting to a trailer, or for additional security control. When the monitor is turned on, it can be used continually or in the SB position when the transmission is put in reverse.

There is a continual power draw by the camera at all times even if the monitor is turned off. It should be disconnected at the battery for long periods of storage.

- E. Remote Control Spot Light - The controls are on the dash face at top center - Refer to operating instructions.
- F. Roof Exhaust Fan - This two-speed, thermostatically controlled fan is located in the roof in the kitchen. - Refer to operating instructions.
- G. Smoke Detector - It should be tested periodically. - Refer to operating instructions.
- H. L.P. Gas Leak Detector - Installed in galley base to alert you to leaking LP gas (12 V cut-off switch must be on during coach use to power detector - turn off for storage).
- I. Leveling Jacks - Controls are on deck floor to left of driver's seat; hydraulic reservoir is in front under access doors. Ignition must be on for jacks to work. See manufacturers operating instructions.
- J. Nightstand courtesy light switch - Located at nightstand, this switch controls aisle courtesy lights.
- K. TV/Antennae/VCR - The video control center, located in your right front overhead, provides selective switching of 5 different input sources to 2 TV set locations and a VCR. These inputs include: Remote antennae, exterior cable hook-up and VCR. (Two additional unused input jacks are provided.)

Simply select the input source you desire to watch at each TV and push the appropriate selector button. Selecting one of the 3 VCR input sources allows that particular signal to be fed directly to the VCR input for recording purposes.

XI. SERVICING AND MAINTAINING YOUR RV

A. CHASSIS MAINTENANCE

Your motor home chassis like all fine vehicles requires regular maintenance for long and trouble-free service. Study your chassis owner's manual for suggested maintenance intervals and for detailed instructions.

Day-to-day care starts with the use of factory recommended fuel. Using the proper grade of fuel will provide satisfactory engine performance. Check the coolant level at least once a month when the engine is cool. Should coolant be necessary, add water and anti-freeze as recommended. Check oil level frequently. Avoid operating the engine with the oil level below the "add" mark on the dipstick. Use only factory specified oil. Other day-to-day care includes checking and maintaining the chassis and RV batteries. Check the fluid level in the battery cells monthly. Remove corrosion around terminals by rinsing with baking soda. After cleaning, coat terminals with grease to retard corrosion.

Keep windshield washer reservoir filled with water and factory recommended windshield washer solution.

Check your brake fluid level. Add only factory recommended brake fluid. For satisfactory operation of your automatic transmission, it is important to use only automatic transmission fluid meeting factory specifications.

Visually inspect the tires daily and have the air pressure checked regularly. Tire pressure lower than recommended will reduce tire life. Higher pressures will tend to give a harsher ride. Always keep tires inflated as recommended.

Front engine models are equipped with rear air bags; GM & Chevy chassis have front air bags in coil springs. Maintain rear pressure of 60 lb. min./100 lb.max., and front pressure of 20 lb. min./50 lb.max.

B. RV BODY

1. **Fiberglass:** Hawkins Motor Coach Motor Homes feature an exterior that is both rugged and functionally beautiful. Its smooth aerodynamic finish is resistant to dents and scratches. By keeping the motor home cleaned and waxed, the fiberglass exterior will maintain its original luster indefinitely.

Damaged surfaces should be repaired by professionals. Your dealer will often be able to repair the damage. If not, check with local automotive body shops.

2. **Roof:** Your motor home roof is fiberglass. Coat all seams and around roof vents once a year with a good quality roof sealer. These are available from your dealer or trailer supply store.
3. **Windows and doors:** Vibration occurs through normal use of your motor home. Screws may need tightening periodically. Use a weather proof sealer around all window and door frames as needed. Lubricate all locks with graphite. Clean all windows with regular household glass cleaner.

4. Laboratory and shower cleaning: Wash with mild soap and water. Do not use abrasive cleaners, scouring pads or solvents as they can damage and dull the finish. Occasional waxing with a good quality automotive wax is recommended for maximum finish protection.

5. Bumpers and Exterior Metal
Chrome and Stainless Steel

Wash all bright metal frequently to alleviate the destructive forces of salt, exhaust gasses and other elements. Follow with a protective coating of a high quality wax. Chrome cleaner or polish may be used before applying the protective coating. Proper protection is the owner's responsibility and parts damaged by chemical action or abrasion are not considered to be defective. Extreme problems will be considered on an individual basis.

C. INTERIOR MAINTENANCE

1. Paneling: The interior cabinetry may be cleaned with a damp cloth. Periodically apply a coating of furniture oil and polish to preserve the finish. Clean vinyl-covered decorator paneling with a liquid household cleaner. Do not use solvents or abrasive cleaners as these could damage the decorated surfaces.
2. Vinyl and velour cleaning: Use an upholstery cleaner or a mild soapy solution. Do not use an abrasive cleaner.
3. Floor Covering: Vacuum the carpets after each trip. Remove stains with standard household carpet cleaner. For stubborn stains see your carpet cleaning specialist for advice.

The wood parquet may be cleaned with a damp mop. Periodically apply a coating of floor wax to maintain the finish and waterproofing.

4. Draperies and Upholstery: The fabrics used in your motorhome are not washable and should be dry cleaned only. Do not launder. Seat covers may be spot cleaned with a foam type spot remover. If overall cleaning becomes necessary, have them dry cleaned by professionals.
5. Table and Counter Tops: Ceramic tile, Corian and high pressure laminate counter surfaces have been selected for their durability and good looks. Regular cleaning with mild detergent will keep the surface like new. Do not use scouring pads to clean, nor use as a cutting board. The tops can be scratched. Do not place hot pots and pans directly on the surface.

XII. WINTERIZATION

A. COLD WEATHER OPERATION

Special precautions must be taken if you wish to camp when temperatures are below freezing and additional winterizing equipment may be needed.

WARNING: NEVER USE THE RANGE OR OVEN FOR SUPPLEMENTARY COMFORT HEATING. All other gas appliances in an RV are vented to the outside and safe to use continuously, but the cooking appliances should be used only while cooking and when in use one or more vents or windows should be open. **DO NOT BE CAUGHT DEAD WITH YOUR GAS RANGE OR OVEN BURNING.**

Keep your motor home heated with the furnace as furnished. Maintain an adequate supply of LP-gas. Allow moisture to escape by keeping a ceiling vent slightly open even in the coldest weather to prevent condensation.

B. WINTER FREEZE PROTECTION

If the motor home is to be stored in temperatures below freezing, the following precautions should be taken:

1. Drain the fresh water system including the water heater.
2. Clean out your holding tanks.
3. Check your automotive radiator solution to ensure that the anti-freeze mix is as recommended for the anticipated temperature.
4. Check water levels and make sure that batteries are fully charged. Batteries will self discharge if not used for a period of time. A partially charged battery will freeze at low temperatures.

C. DRAINING THE FRESH WATER SYSTEM

After leveling the RV, the fresh water system should be completely drained by opening all faucets and drain valves, including that on the water heater and water storage tank. The shower mixing valve and bottom valve on the shower telephone head should also be opened.

The following procedure is recommended:

1. Open all faucets, valves and drains.
2. Leave drains open.
3. Block the toilet valve open (the mechanical-seal type). This may be done by blocking the seal in the bottom of the bowl open with some object of proper size being careful it does not fall through into the holding tank.
4. If a water filter is installed, remove the filter cartridge and drain lower portion of the housing.
5. Turn water pump switch on. Allow pump to run dry for a few minutes and then turn switch off.
6. If an anti-freeze solution is now added to the water system for more positive protection, be sure it is of a type approved for potable water systems. **DO NOT USE AUTOMOTIVE TYPE ANTI-FREEZE.**
7. Leave all faucets and valves closed during storage. Before operating the RV again be sure to sanitize the water system in accordance with the instructions in part III A.

D. PREPARING DRAINAGE SYSTEM FOR STORAGE

The entire drainage system should be thoroughly drained and flushed with fresh water. The following procedures are recommended:

1. Completely drain holding tank(s) of waste material.
2. Flush sinks, shower, and lavatory with solution of hot water, and soap. Rinse well and allow solution to drain into tanks. Flush with clean hot water.
3. Agitate water in tank by rocking vehicle or, for more thorough cleaning, drive vehicle for a few miles. Drain tanks again.
4. Alternate to Step No. 3 to use a chemical deodorant - let mixture stand a few days and then drain.
5. Flush with fresh water and again drain.
6. Fill traps and partially fill tanks with an anti-freeze approved for use in plastic pipes. Normally, a cupful of anti-freeze poured into each drain will fill the trap. Do not use anti-freeze solutions with an alcohol base.

E. STORAGE DURING FREEZING WEATHER

A battery that is not kept up to full charge must be given protection against freezing. A partially charged battery will freeze at low temperatures, so it must either be left connected to a trickle charger or removed from the recreational vehicle and stored in a warm location. A battery will normally discharge itself in a few weeks, so if it is to maintain a charged condition, it still must be charged from time to time even in warm storage. Add water as required.

F. STORAGE DURING NON-FREEZING WEATHER

Battery protection should be the same as for freezing weather, as unused batteries will shortly discharge themselves. For prolonged storage, drain and flush out all systems. Leave ventilators open as much as possible without admitting rain. Remove perishables and empty refrigerator/freezer leaving it clean, with door ajar. Put a cap or screen over the roof vent of the refrigerator. Birds find this an attractive place to build nests. Be sure to remove the cap before using the refrigerator again.

G. GENERAL STORAGE NOTES

Drawing drapes will reduce fading of rugs and upholstery. Leaving an air freshener agent will minimize odors from plastics and other materials. Slight opening of cab windows and vents will allow air circulation without worry of water entering. For prolonged storage, it is advisable to go over all roof seams and vent flashing seams with a good roof coating material. Spraying silicone on mechanisms will minimize effects of corrosion. Covering wheels to eliminate direct rays of the sun on tires will reduce the sidewall cracking.

H. CHASSIS STORAGE NOTES

See Chassis Manufacturers Manual for special precautions and procedures applying to your specific chassis.

I. PREPARATION OF ENGINES FOR STORAGE

Many motor home owners use their vehicles seasonally and do not drive them extensively throughout the year. Motorhome and recreational vehicles which may be inoperative for varying periods of time require protective measures to insure against damage and deterioration. These vehicles are subject to the formation of rust on the operating parts of their engines which will, in the course of time, lead to excessive piston ring wear, sticking valves and rocker arms and abnormal wear on valve guides and other moving parts. Since conditions produced by rust formation will materially shorten engine life, vehicles of this type which may be stored for any appreciable length of time require special preparation to prevent damage from internal rusting and deterioration of other components.

J. STORAGE FOR LESS THAN THIRTY DAYS

In cases where the vehicle will be inoperative or in storage for less than thirty days or will be driven infrequently during this period, the following steps are recommended:

1. Add one quart of special rust preventive oil for each five gallons of gasoline in the fuel tank.
2. Run the engine on this mixture for five minutes at an engine speed of 1000 RPM. No additional treatment will be necessary when the vehicle is returned to storage after having been driven for a short distance.

K. STORAGE FOR MORE THAN THIRTY DAYS

The following steps are recommended if the vehicle is to be stored for more than thirty days (but not over ninety days) and the engine will not be operated during the storage period.

1. Add one quart of special rust preventive oil to each five gallons of gasoline in the fuel tank.
2. Run the engine on this mixture for at least five minutes at an engine speed of 1000 RPM.
3. Drain fuel tank and continue to operate engine until carburetor runs dry. The purpose of this step is to prevent the carburetor from becoming contaminated with the gums which normally forms in gasoline after prolonged exposure to oxygen in the air. Failure to observe this precaution usually causes flat spots and other carburetor malfunctions.
4. Remove spark plugs and pour two ounces of special rust preventative oil into each cylinder through spark plug openings. Crank engine through several revolutions with starter to distribute rust preventative oil on cylinder walls. Replace spark plugs.
5. Remove valve covers and coat rocker arms, rocker arm shafts, valve springs, push rods and valve stems with special rust preventative oil. Use a clean paint spray gun with dry air.
6. Check cooling system for leaks and adequate protection for low temperatures likely to be encountered during the storage period.

L. STORAGE OVER NINETY DAYS

If vehicles are to be stored more than ninety days, treat as outlined above and perform additional operations outlined below.

1. First Method

- A. Drain cooling system and tag vehicle accordingly so it will not be started until coolant is replaced.
- B. Completely lubricate the vehicle, check transmission, rear axle and steering system for proper lubricant level.
- C. Place vehicle on blocks or jackstands to take weight off tires. Inflate tires to recommended pressures. Clean all oil and grease from tires and be sure valve caps are in place.
- D. Disconnect battery cables. Clean and coat terminals with grease; remove battery and place on trickle charge for future use.

2. Second Method

At least once every 30 days, operate vehicle at highway speed for a minimum of one hour.

FOR YOUR OWN SAFETY

1. **WARNING:** LP-Gas containers shall not be placed or stored inside the vehicle. LP-Gas containers are equipped with safety devices which relieve excessive pressure by discharging gas to the atmosphere.

2.



This warning label has been located in the cooking area to remind you to provide an adequate supply of fresh air for combustion. Unlike homes, the amount of oxygen supply is limited due to the size of the recreational vehicle and proper ventilation when using the cooking appliances will avoid dangers of asphyxiation. It is especially important that cooking appliances not be used for comfort heating as the danger of asphyxiation is greater when the appliance is used for long periods of time.

3. **WARNING:** Do not overfill LP-Gas container to more than 80 percent. Overfilling the LP-Gas container can result in uncontrolled gas flow which can cause fire or explosion. A properly filled container will contain approximately 80 percent of its volume as liquid LP-Gas.

4. **WARNING:** Portable fuel-burning equipment, including wood and charcoal grills and stoves, shall not be used inside the recreational vehicle. The use of this equipment inside the recreational vehicle may cause fires or asphyxiation.
5. **WARNING:** Do not bring or store LP-Gas containers, gasoline, or other flammable liquids inside the vehicle because a fire or explosion may result.
6. The following label has been placed in the vehicle near the range area:

IF YOU SMELL GAS:

1. Extinguish any open flames, pilot lights and all smoking materials.
2. Do not touch electrical switches.
3. Shut off the gas supply at the tank valve(s)
4. Open doors and other ventilating openings.
5. Leave the area until odor clears.
6. Have the gas system checked and leakage source corrected before using again.

16

7. LP-Gas regulators must always be installed with the diaphragm vent facing downward. Regulators that are not in compartments have been equipped with a protective cover. Make sure that regulator vent faces downward and that cover is kept in place to minimize vent blockage which could result in excessive gas pressure causing fire or explosion.