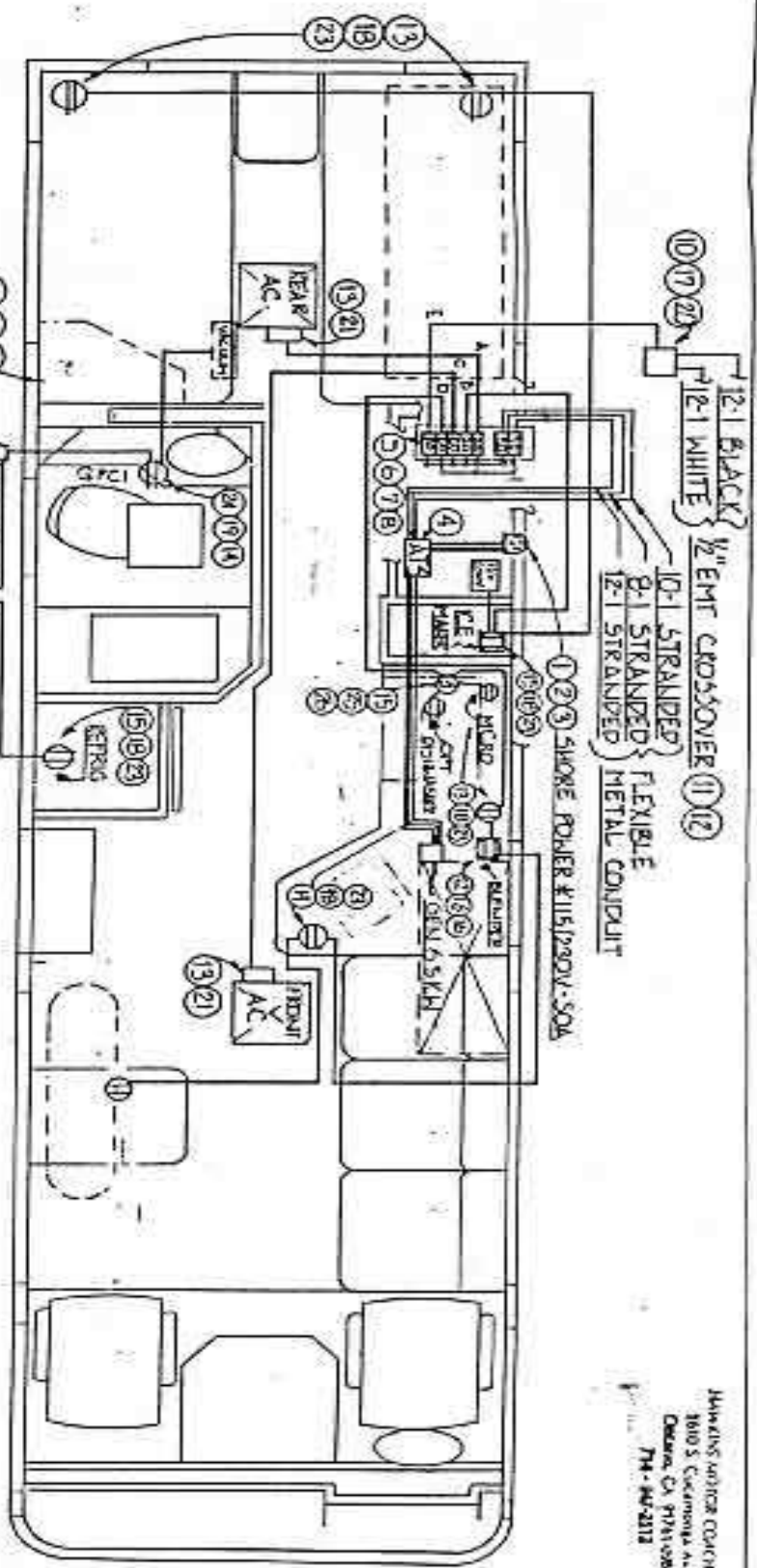


Hawkins Motor Coach Inc.

1985-1990 HMC Motorhome Wiring Diagrams

HAWKINS MOTOR COACH INC
 1610 S. COLUMBIA AVE.
 OAKLAND, CA 94612-0881
 704-447-2112



CIRCUIT	FIXED APPLIANCES	AMPS BEAKER
LEG A	REAR AIR COND	15.3 20A
LEG B	ICE MAKER 12V CONVERTER (2) OUTLETS	1.6 3.0 20A
LEG C	FRONT AIR COND	15.3 20A
CIRCUIT	FIXED APPLIANCE	AMPS BEAKER
LEG D	MICROWAVE (or) PORTABLE BLENDER (3) OUTLETS	12.0 11.0 5.4 20A
LEG E	REFRIGERATOR VACUUM (2) OUTLETS	2.7 7.0 20A

NOTES:
 - (A) ALL ELECTRICAL INSTALLATIONS, SYSTEMS & EQUIPMENT COMPLIES W/1982 ED. NFPA 501C, ANSI A119.2; FMVSS 301 & 302; ARTICLE 551, PART 4 OTHER APPLICABLE SECTIONS OF NFPA 70, NAT'L. ELECT. CODE, 1981 & CA, ADMIN. CODE, TITLE 25, CH. 3 SUBCHAPTER 2.
 - (B) THE POWER SUPPLY TO THE MOTORHOME SHALL BE A FEEDER ASSEMBLY CONSISTING OF NOT MORE THAN ONE LISTED 50 AMP. POWER SUPPLY CORD.
 - (C) SEE PG 2 FOR LOAD CALCULATIONS.

HAWKINS MOTOR COACH, INC.
 SCALE: NTS DATE: 9/87 DRAWN: JJ APP'D:
 E-5 50 AMP 120/240 VOLT
 ELECT. SYSTEM SCHEMATIC
 NO. _____ REVISED: 1 OF 2 C.A.S. NO. H-302

1	7/8" CROM SOUP CAN	✓		
2	SOUP DRAINER	✓		
3	2" CROM SOUP	✓		
4	1/2" 1/2" VERT. STAINLESS	✓		
5	1/2" 1/4" CROM SOUP	✓		
6	1/2" 1/2" CROM SOUP	✓		
7	LOCKING	✓		
8	4" FA 1/2" 3/4" 5/8" 3/4"	✓		
9	RECIPROK EXH-KIT 1/2" 1/2" 1/2"	✓		
10	1/2" 1/2" 1/2" 1/2" 1/2"	✓		
11	FACE BRASSANCE POINT	✓		
12	PANEL	✓		
13	50 AMP MAIN SW	✓		
14	50 AMP BREAKER	✓		
15	50 AMP 120V BREAKER	✓		
16	50 AMP 120V BREAKER	✓		
17	50 AMP 120V BREAKER	✓		
18	50 AMP 120V BREAKER	✓		
19	50 AMP 120V BREAKER	✓		
20	50 AMP 120V BREAKER	✓		
21	50 AMP 120V BREAKER	✓		
22	50 AMP 120V BREAKER	✓		

23	COVER PLATE - ONE GANG	✓		
24	DUPLEX BRN	✓		
25	COVER PLATE ONE GANG	✓		
26	DUPLEX OFF WHITE	✓		
27	3 POSITION - 20 AMP 115V 2P 1P	✓		
28	3 POSITION - CTR OFF BRN	✓		
29	COVER PLATE - MICRO/SW	✓		
30	SWITCH SWITCH - ONE GANG	✓		
31	ENGRAVED	✓		
32	DUPLEX RECEPTACLE w/ WEATHERPROOF COVER PLATE	✓		

LOAD CALCULATION				
LIGHTING - 3.6 x 3		2100		
SMALL APPLANCE - 1500 x 3		4500		
TOTAL:		6600		
3000 W. AT 100%		3000		
REMAINDER 3600 - 3000 = 600		600		
TOTAL = 3600		3600		
3600 = 16.6 AMP PER LEG				
BEAR AIR COND	15.0	15.0		
FRONT AIR COND		15.0		
I.V. CONVERTER		3.0		
ICE MAKER		2.16		
MICROWAVE	12			
BLENDER	5.9			
REFRIG.	2.7			
VACUUM	7.0			
LIGHTING & SMALL APPLANCE	16.6	16.6		
TOTAL	49	48.9		
(CALC PER TITLE 250CH 2.200(11))				

Approved Motor Coach, Inc.
1370 S. Coalinga Ave.
Oxnard, CA 93048
Tel. 805-481-1111

NO.	REVISIONS	DATE	BY	APP'D

HAWKINS MOTOR COACH, INC.

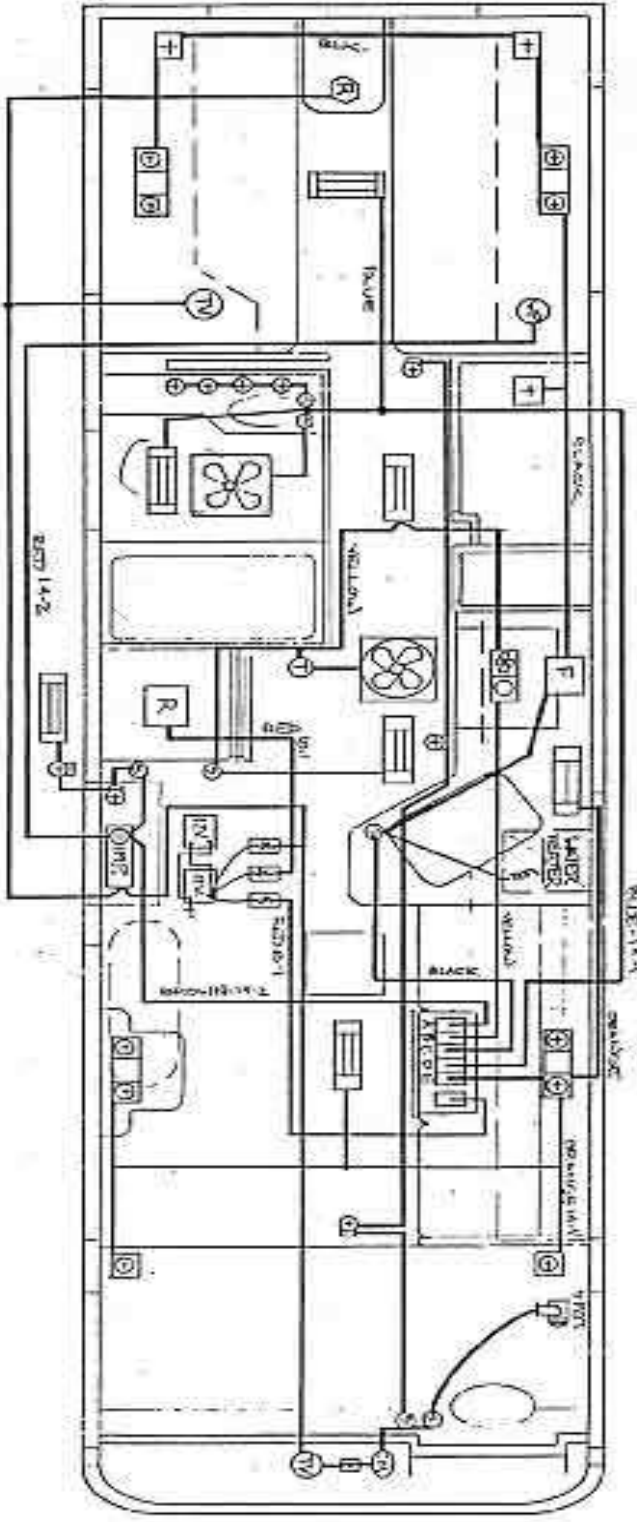
DATE 12/18/2018 BY JAW

E-S/50 AMP 120/240 VOLT ELECTRICAL SYSTEM SCHEMATIC

Z01 Z1 JWC NO. H-302

HAWKINS MOTOR COACH, INC.
 1818 S. COLUMBIA AVE.
 OAKLAND, CA 94612
 714-945-2512

*NOTES: ALL MATERIALS & CONSTRUCTION CONFORM TO 1982 EDITION NFPA 501-C, ANSI A119-2, FMVSS 301 & 302.
 COPPER CONDUCTORS SHALL BE USED FOR LOW-VOLTAGE CIRCUITS.
 SINGLE-WIRE, LOW VOLTAGE CONDUCTORS SHALL BE OF THE STRANDED TYPE.

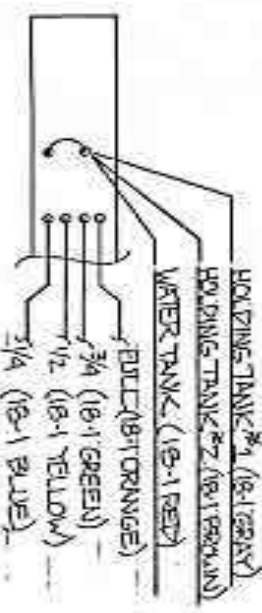
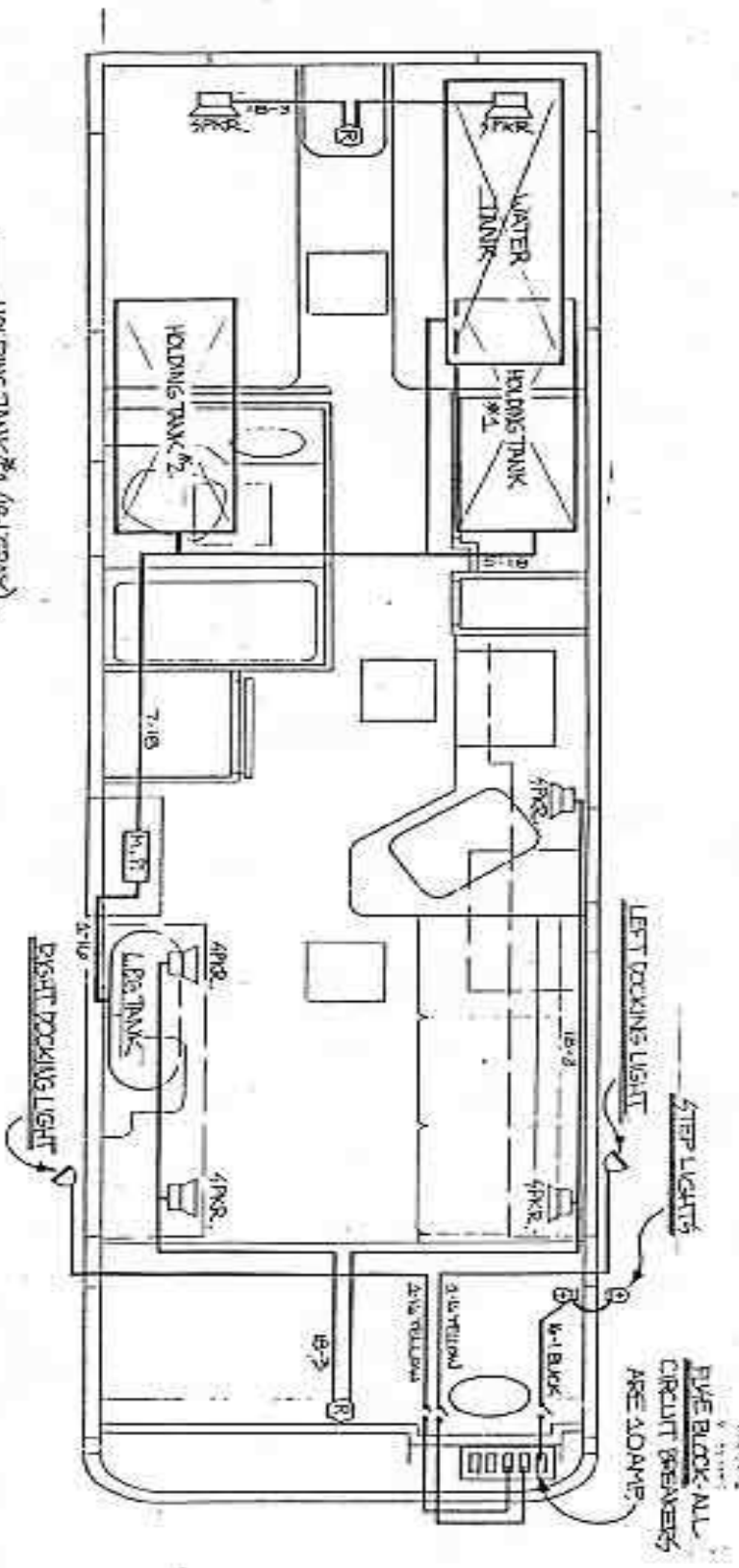


LEGEND	AMP	LEGEND	AMP
1. FINE PNEUMATIC LIGHT	1.0	1. THERMOSTAT	0
2. TURBULENT LIGHT	2.0	2. WATER HEATER/VALVE	1.0
3. HOOD VENT	1.0	3. WATER HEATER/VALVE	0
4. LIGHTED VENT VENT	3.6	4. HOT EXHAUST FAN	2.5
5. NON-VENTILATED LIGHT	1.1	5. REFRIGERATOR LIGHT	1.0
6. DOUBLE BULLET LIGHT	2.0	6. 100MM CAPACITIVE DISC	3.0
7. HIGH-TEMPERATURE LIGHT	6	7. 40000 WATTY LIGHT	5.6
8. PURNACE	3.2	8. SWITCH	0
9. REFRIGERATOR	20.0	9. CONDENSER/WATER VALVE	1.0
10. TV JACK	5.0	10. CLOCK	-
11. WATER PUMP	7.0	11. 400 WATT LIGHT	-
12. SINGLE BULLET LIGHT	3.0		

CONVERTOR LOAD CALCULATION	AMP
TOTAL CONVERTOR LOAD	92.3
FIRST 20 AMP/50% 100%	20.0
2nd 20 AMP/50% 50%	10.0
AMP OVER 40-25%	3.1
CALCULATED LOAD	33.1
CONVERTOR RATINGS	45.0

CIRCUIT	WIRE	COLOR	AMP	RULE	BEWER
A	14-2	RED	0.2	15A	-
B	14-1	YELLOW	11.1	15A	-
C	14-1	BLACK	11.4	15A	-
D	14-1	BLUE	10.6	15A	-
E	14-1	ORANGE	9.0	15A	-
F	10-1	RED	20.0	-	30A
G	12-1	GREEN	9.0	-	20A
H	8-1	RED	-	-	40A

HAWKINS MOTOR COACH, INC.
 DATE: 7/15/82
 DRAWN BY: J. H. HARRIS
 CHECKED BY: J. H. HARRIS
 42 VDC SCHEMATIC (H7302)
 E-1
 1 of 2 sheets of H7302

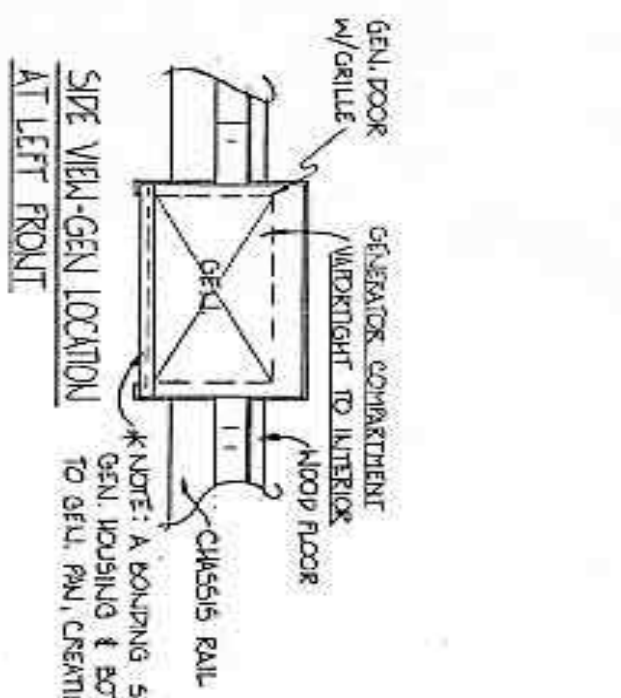


WATER/HOLDING TANKS WONTOR WIRING DETAIL

*NOTE: ALL MATERIALS & CONSTRUCTION CONFORM TO 1982 EDITION OF NFPA NO. 501-C, FMVSS-302 & 302.1. COPPER CONDUCTORS SHALL BE USED FOR LOW-VOLTAGE CIRCUITS. SINGLE-WIRE, LOW-VOLTAGE CONDUCTORS SHALL BE OF THE STRANDED TYPE.

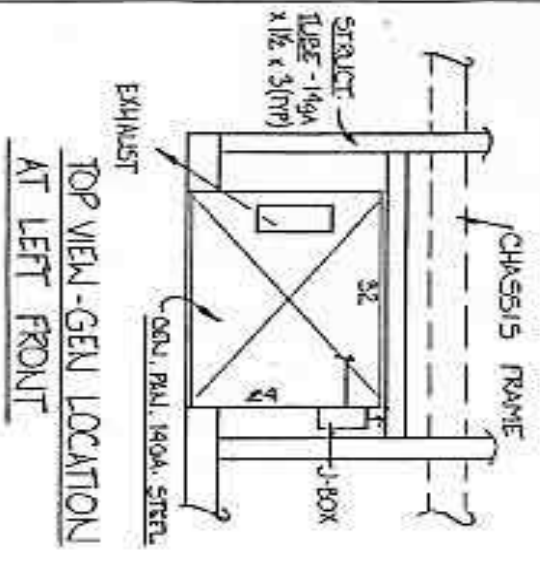
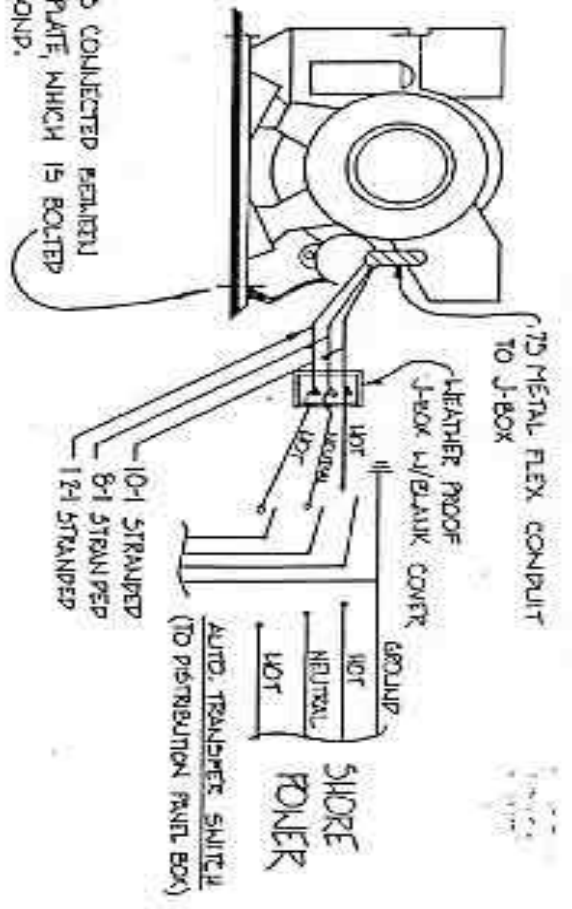
HAWKINS MOTOR COACH, INC.
1810 S. COLUMBIAN AVE.
ORLANDO, CA 97108
714-9603112

HAWKINS MOTOR COACH, INC.	
SCALE 1/16" = 1'-0"	DATE 11/15/82
BY 12 VDC AUTOMOTIVE CIRCUITS #	DESIGNED BY [Signature]
WONTOR PANEL CIRCUITS # E-1	APPROVED BY [Signature]
NO.	REVISED
	DATE
	BY
	REASON



SIDE VIEW-GEN LOCATION
AT LEFT FRONT

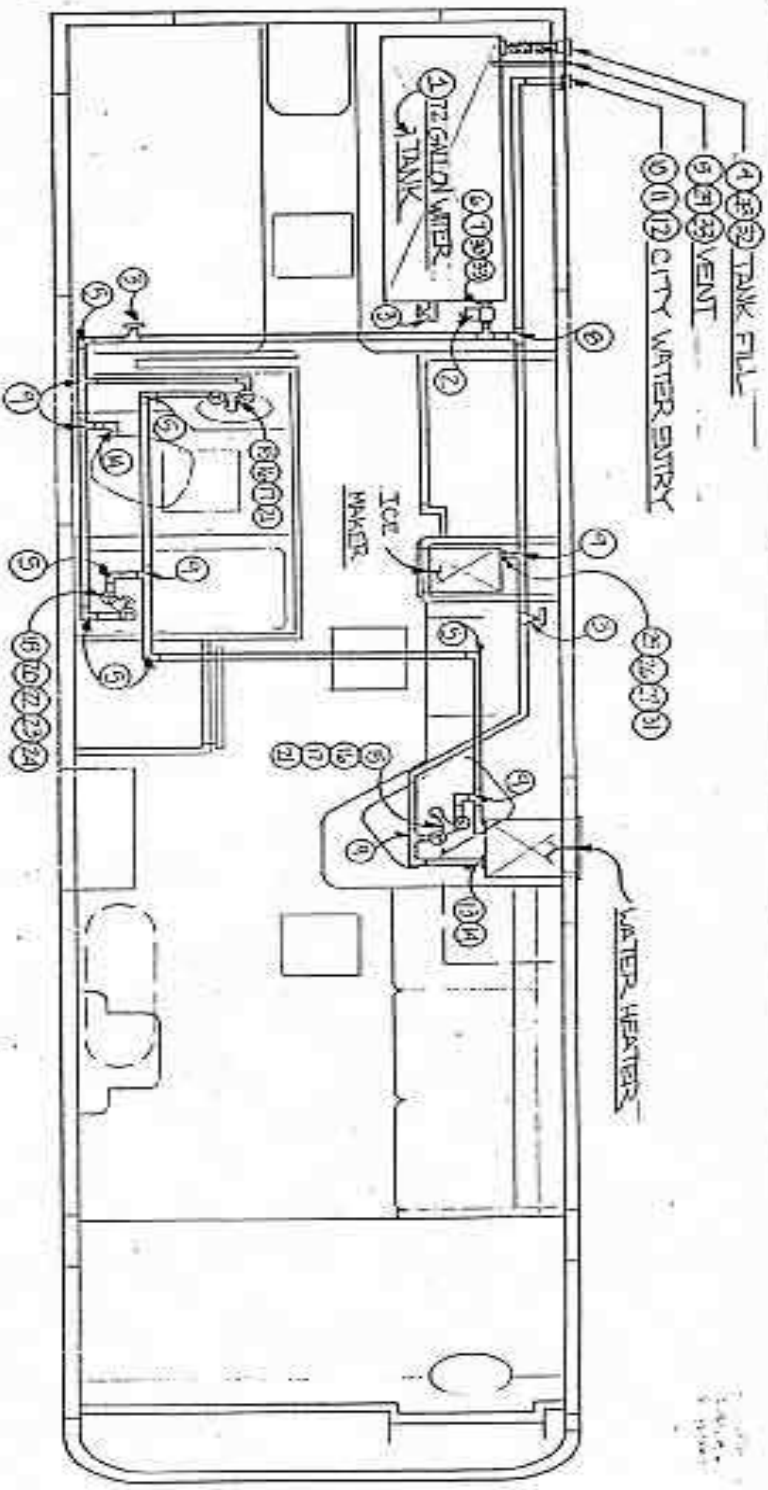
*NOTE: A BONDING STRAP IS COLLECTED REAR END GEN. HOUSING & BOTTOM PLATE, WHICH IS BOLTED TO GEN. PAN, CREATING BOND.



TOP VIEW-GEN LOCATION
AT LEFT FRONT

HAWKINS MOTOR COACH, INC.
1010 S. CUCKOOBAY AVE
CUCUMBER CA 91710-1001
714-940-2532

NO.		REVOLUTIONS		BY DATE		OR		DOWNS NO.	
HAWKINS MOTOR COACH, INC.									
SPEC. LITS DATE 7/6/87 (ISSUE 11) APPRO									
PR. ENGINE COMP AND WIRING									
GENERATOR									



ITEM	DESCRIPTION	QTY	ITEM	DESCRIPTION	QTY	ITEM	DESCRIPTION	QTY
1	272 GAL. WATER TANK	1	12	WATER RESERVE	1	26	WATER HEATER	1
2	WATER PUMP (1/2 HP)	1	13	COBAMER 1/2" PIPE	2	27	OTHER DIMENSION	1
3	1" PUMP W/OUT COIL	3	14	AIR FILTER	3	28	1" FILTER	1
4	1" PUMP W/OUT COIL	4	15	1" PUMP W/OUT COIL	2	29	OTHER DIMENSION	1
5	1" PUMP W/OUT COIL	6	16	1" PUMP W/OUT COIL	2	30	1" PUMP W/OUT COIL	1
6	1" PUMP W/OUT COIL	1	17	1" PUMP W/OUT COIL	2	31	1" PUMP W/OUT COIL	1
7	1" PUMP W/OUT COIL	1	18	1" PUMP W/OUT COIL	1	32	1" PUMP W/OUT COIL	2
8	1" PUMP W/OUT COIL	2	19	1" PUMP W/OUT COIL	1	33	1" PUMP W/OUT COIL	1
9	1" PUMP W/OUT COIL	1	20	1" PUMP W/OUT COIL	1			
10	1" PUMP W/OUT COIL	1	21	1" PUMP W/OUT COIL	1			
11	1" PUMP W/OUT COIL	1	22	1" PUMP W/OUT COIL	1			
12	1" PUMP W/OUT COIL	1	23	1" PUMP W/OUT COIL	1			
13	1" PUMP W/OUT COIL	1	24	1" PUMP W/OUT COIL	1			
14	1" PUMP W/OUT COIL	1	25	1" PUMP W/OUT COIL	1			

NOTES:

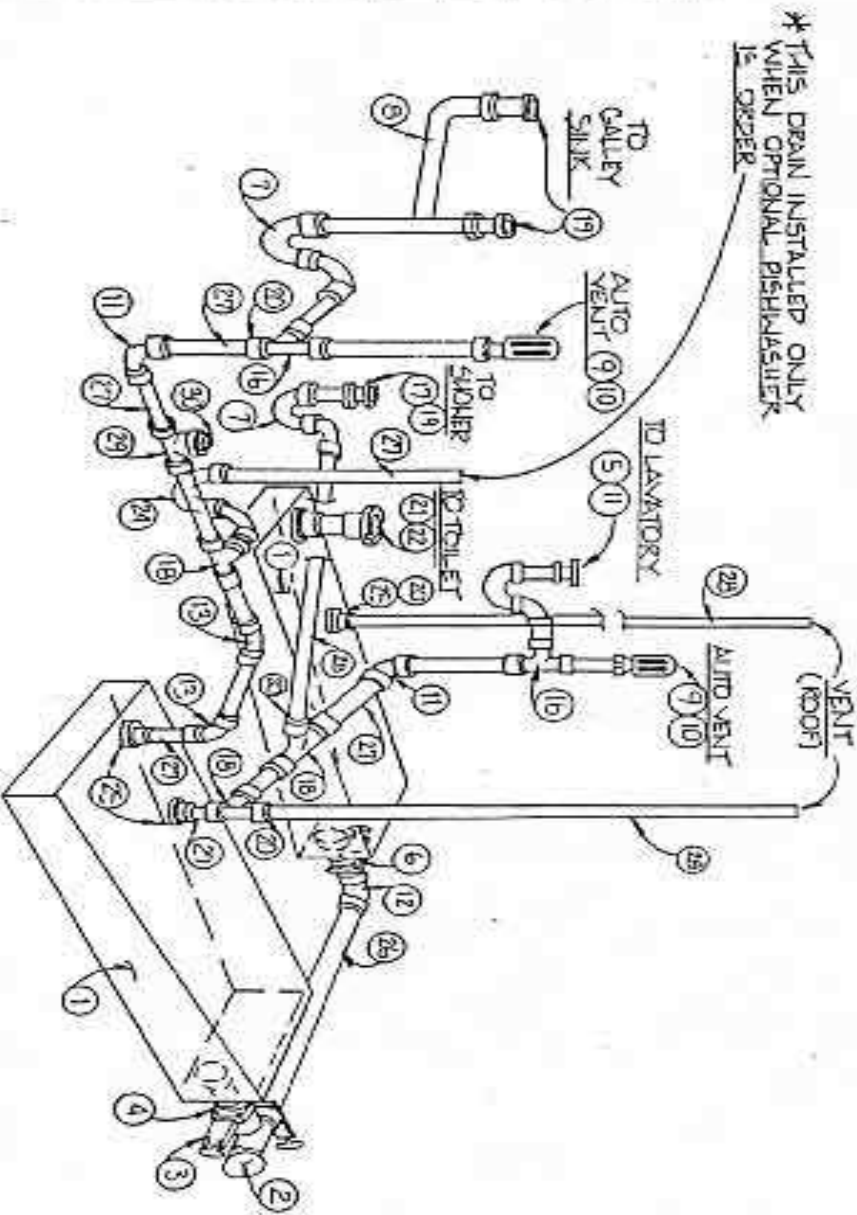
- DEL-COATED MESHGLASS REINFORCED POLYESTER
- REGION SHOWER STALLS 3/4" FIBRO FILING T-2091
- WTR. STR. W/TEMP. PRESS. REL. VAL. AND DRAIN
- COMPLES WITH 4-6-7.1 AND 4-6-7.2 OF ANSI A119.2.

HAWKINS MOTOR COACH INC.
 3610 S. Cucamonga Ave.
 Orange, CA 92667
 714-947-2312

HAWKINS MOTOR COACH INC.
 3610 S. Cucamonga Ave.
 Orange, CA 92667
 714-947-2312

1. 1. 1. H-302

ITEM	DESCRIPTION	QTY
1	HOLDING TANK	2
2	SAFETY 3" PIPING	4
3	KNIFE VALVE - 1/2" SPIG. & 1" HOUB.	1
4	EXCENTRIC TANK REDUCER	4
5	SEWER HOSE FOR TOR 3" PIPE	1
6	KNIFE VALVE - 3/4" HUB x 1" SPIG.	1
7	PT. PROP. 1 1/2" x 1 1/2" HUB x 1 1/2" HOUB.	3
8	CONTINUOUS WIRE - 1/4" DIA. x 3/4" W. x 1 1/2" L.	4
9	2" Ø PIPING - 1/2" W. x 2 1/2" L.	2
10	AUTO VENT - 1 1/2" PPT	2
11	ELBOW - 90° EXTRA LONG TURN 3/4" H. x 1 1/2" H.	4
12	ELBOW - 90° LONG TURN 3/4" x 3/4" H. x 3/4" H.	1
13	ELBOW - 45° SHORT TURN 1/2" H. x 1 1/2" H.	2
14	ELBOW	2
15	PLASTIC TEE - 1 1/2" x 1 1/2" x 1 1/2" H.	2
16	PLASTIC TEE - 1 1/2" x 1 1/2" x 1 1/2" H.	2
17	RANDELS STRAIGHT CONNECTOR 1 1/2" PPT x 1 1/2" H.	1
18	PLASTIC TEE - 1 1/2" x 1 1/2" x 1 1/2" H.	1
19	PLASTIC TEE - 1 1/2" x 1 1/2" x 1 1/2" H.	2
20	PLASTIC TEE - 1 1/2" x 1 1/2" x 1 1/2" H.	2
21	TOILET FLUOR	4
22	TOILET FLANGE - 3" Ø	4
23	TANK GROUNDWELT - 3"	1
24	STRAP & H.S. ST. W/ DRAIN	1
25	TANK GROUNDWELT - 1 1/2"	3
26	3" Ø PIPING	2
27	1 1/2" Ø PIPING	15
28	1 1/2" Ø PIPING	10
29	CLAMP ON TEE - 1 1/2" x 1 1/2"	1
30	CLEAN OUT 200 - 1 1/2"	1



NOTE:

- * HORIZONTAL VENT TO BE ABOVE THE EXTREME FLOOD LEVEL OF THE FIXTURE IT IS VENTING.
- * ALL MATERIALS, ALL CONSTRUCTION, CONFORM TO 1982 EDITION NFPA NO. 501C & NFPA 501 & 502
- * TRAP ARM LENGTHS SHALL NOT EXCEED THE ALLOWABLE 34"

HAWKINS MOTOR COACH, INC.
 1610 S. COLUMBIA AVE.
 ONTARIO, CA 91761
 714-367-2572

NO.	REVISIONS	BY DATE	DWG. NO.
			14-302

HAWKINS MOTOR COACH, INC.
 SCALE: LOTS DATE 7/4/87 [Signature] [Signature]
R-15 DRAIN PLUMBING SYSTEM

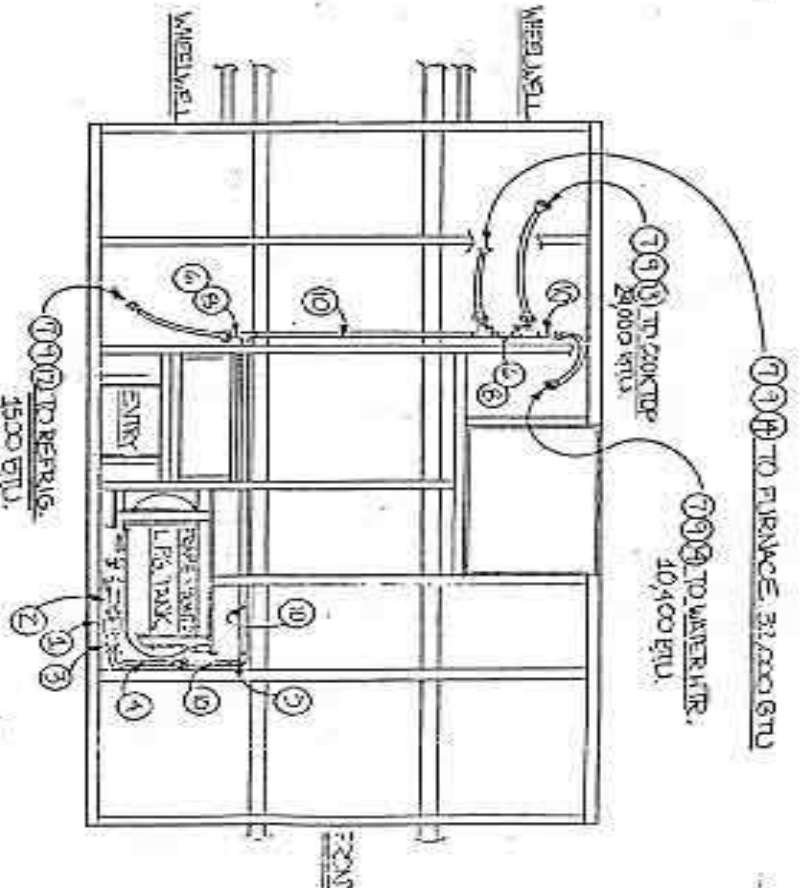
ITEM#	DESCRIPTION	QTY
1	REGULATOR, LOCKER 1/4 FPT 3/8 FPT	1
2	ADAPTER: 1/2" - 1/4" FPT W/ EXCESS ADAPTER: 3/4" FL x 1/2" FPT BRASS	1
3	ADAPTER: 3/4" FL x 1/2" FPT BRASS	1
4	L.F.G. HOSE: 3/8" ID x 1 FT, FL - 1/4" V x 1/2" FPT	1
5	ELBOW: 1/2" FPT - BLACK	1
6	TEE: 1/2" x 1/2" x 1/2" FPT BLACK	3
7	ADAPTER: 3/4" FL x 1/2" FPT BRASS	4
8	ADAPTER: 3/4" FL x 1/2" FPT BRASS	3
9	FLARE NUT: 3/4" OD TUBE - BRASS PIPERUNO 1/2" ID	4
10		10 x 1/2"
12	TUBE (COPPER) 3/8" OD x 6 FT.	1
13	" " " " " " 6 FT.	1
14	" " " " " " 4 FT.	2

NOTE: Conditions and limitations for systems. Getting
pressure and to provide for safe operation, including an
insulating application from the same type.

* GENERATOR AND FUEL SYSTEM INSTALLATIONS PER
ANSI A119.2, 2-10.2 AND 2-10.3
* RANGE CLEARANCE PER ANSI A119.2, 2-6.7.2
* ALL PIPING SHALL BE ADEQUATELY SUPPORTED TO
COMPLY W/ANSI A119.2, 2-4.17
* 2 STAGE RED W/ EXCESS FLOW/ SHUT-OFF VALV. COMBLES
W/ANSI A119.2, 2-2.7.5, 2-2.7.6, 2-2.7.7
* NOTE: ALL MATERIALS, ALL CONSTRUCTIONS TO CONFORM
TO 1982 EDITION ANSI A119.2, NFPA 501-C, FMVSS 201 & 302

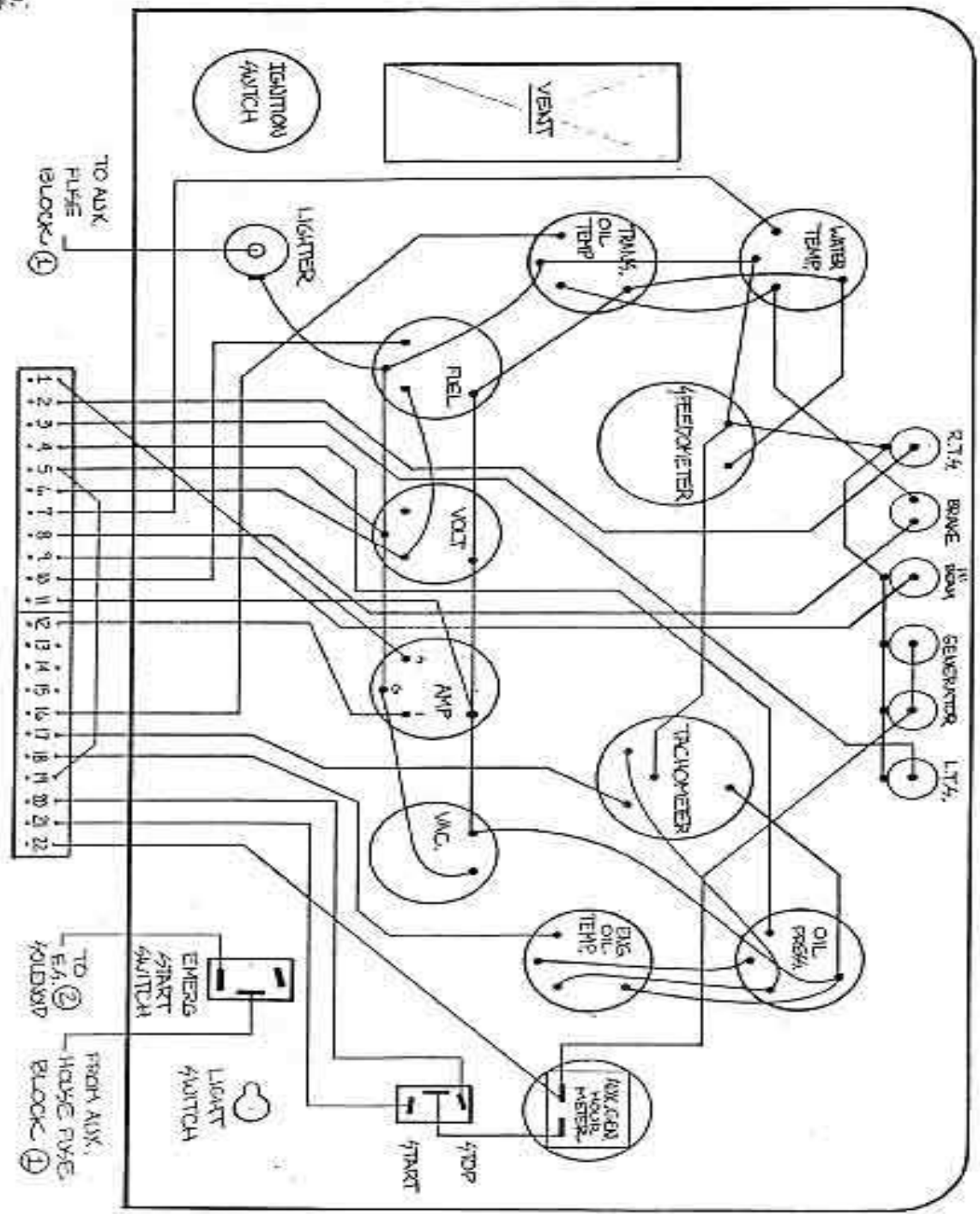
HAWKINS MOTOR COACH, INC.
1410 E. COLUMBIA AVE.
OAKLAND, CA 94612
714-963-3112

HAWKINS MOTOR COACH, INC.
10133 COLUMBIA AVE.
CHINO, CA 91710
714-963-3112



* MAXIMUM DEVELOPED LENGTH LIST OF 1/2" PIPING
MAINFOLD.
NOTE: USE PLASTIC GROMMET WHERE COPPER JOINS
PASSEY THROUGH FLOOR OR PARTITION.

NO.	DESCRIPTION	QTY	REMARKS
1	REGULATOR, LOCKER	1	
2	ADAPTER: 1/2" - 1/4" FPT W/ EXCESS	1	
3	ADAPTER: 3/4" FL x 1/2" FPT BRASS	1	
4	L.F.G. HOSE: 3/8" ID x 1 FT, FL - 1/4" V x 1/2" FPT	1	
5	ELBOW: 1/2" FPT - BLACK	1	
6	TEE: 1/2" x 1/2" x 1/2" FPT BLACK	3	
7	ADAPTER: 3/4" FL x 1/2" FPT BRASS	4	
8	ADAPTER: 3/4" FL x 1/2" FPT BRASS	3	
9	FLARE NUT: 3/4" OD TUBE - BRASS PIPERUNO 1/2" ID	4	
10		10 x 1/2"	
12	TUBE (COPPER) 3/8" OD x 6 FT.	1	
13	" " " " " " 6 FT.	1	
14	" " " " " " 4 FT.	2	

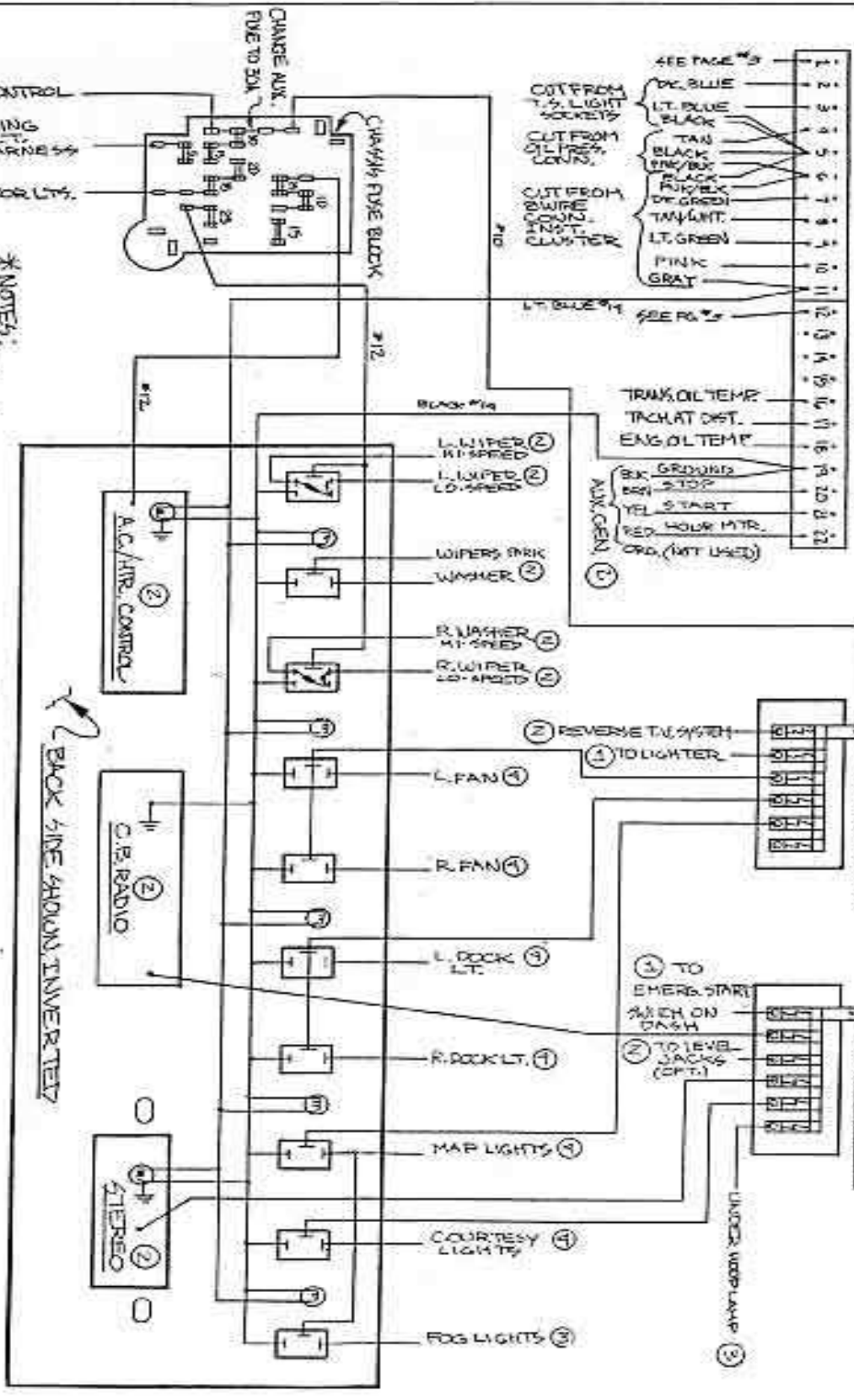
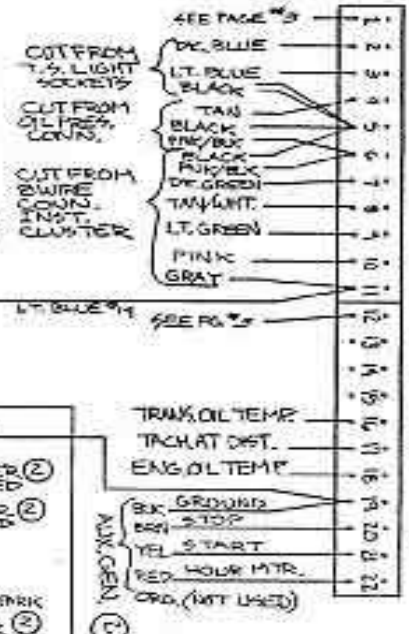


- NOTES:
- ① SEE PG. 2.
 - ② SEE PG. 3.

REAR OF PANEL
SHOWN

HAWKINS MOTOR COACH, INC.	
SCALE	DATE
1/8"	5/28/55
INSTRUMENT WIRING DIAGRAM	
MVC COACH 'A'	
NO.	REVISIONS
	BY DATE 1 OF 5 BMC NO. CLASSIFY WIRING - TYP.

INSTRUMENT PANEL TERMINAL BLOCK (SEE PG. 2)



***NOTES:**

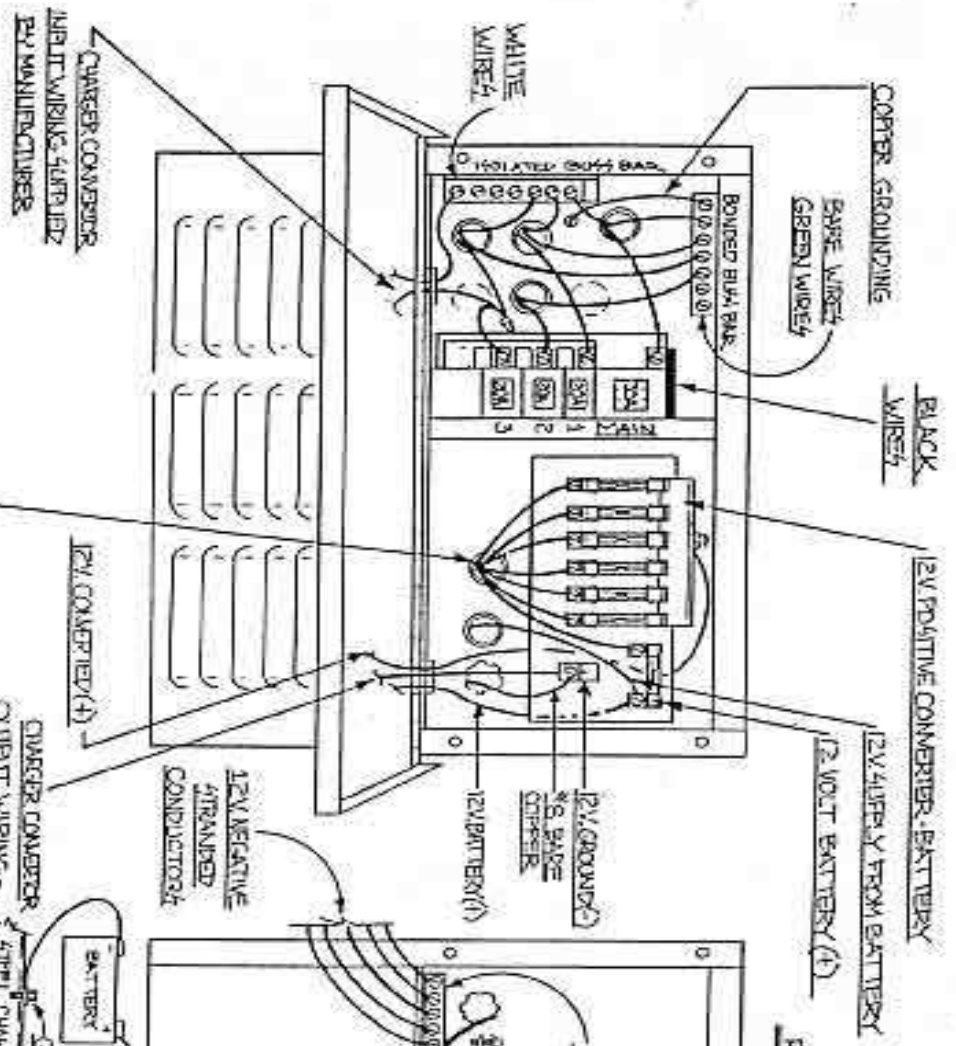
- ① SEE PG. 2, 'INSTRUMENT WIRING DIAGRAM'
- ② SEE COMPONENT MANUFACTURER'S INSTALLATION INSTRUCTIONS
- ③ SEE PG. 4, 'HEADLIGHT TUBE SIGNAL WIRING'
- ④ SEE INDM. MODEL'S 12 V. WIRING DETAILS
- ⑤ CRUISE CONTROL TO STEERING UNIT HARNESS
- ⑥ DRIVERS DOOR L.T.

BACK SIDE SHOWN INVERTED

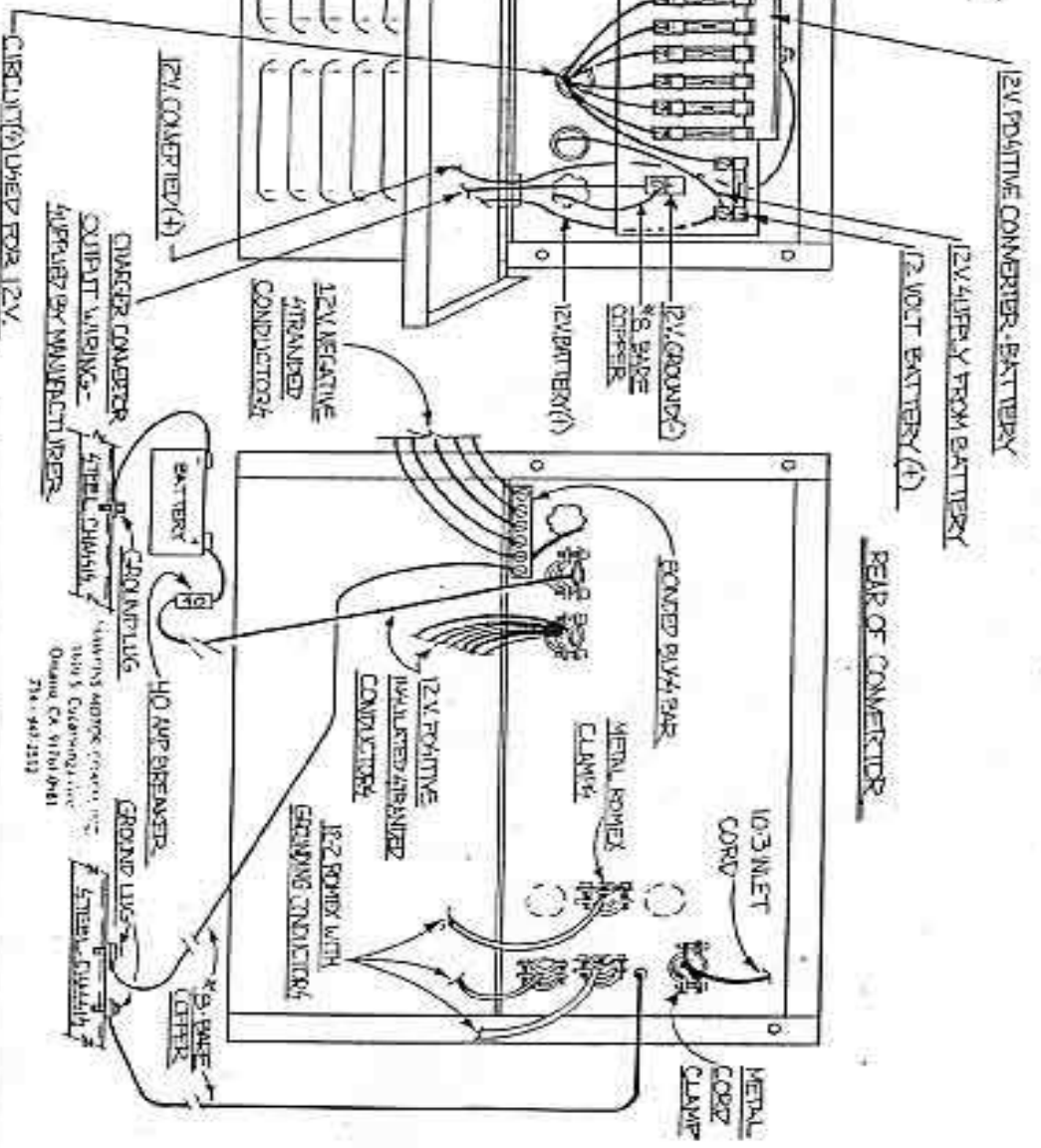
NO.	REVISIONS	DATE	BY	CHKD.	DESC.

HAWKINS MOTOR COACH, INC.
 1001 N. 1st St. / 1001 N. 1st St. / 1001 N. 1st St.
 RADIOWATCH PANEL WIRING
 HMC-CLASS K

FRONT OF CONVERTER



REAR OF CONVERTER



*NOTE: CONVERTOR COMPLETES WITH U.L. 47D 45B, AND SHALL BE INSTALLED IN ACCORDANCE WITH MANUFACTURER'S INSTALLATION INSTRUCTIONS.

CIRCUITRY USED FOR 12V. IT IS NOT RECOMMENDED FOR USE WITH AN UNLIT TUBE POWER SOURCE.

HAWKINS MOTOR COACH, INC.
 3005 S. CALIFORNIA AVE.
 ONAMA, CA 91004-0981
 714-949-2512

NO.	REVISIONS	DATE	BY	DESCRIPTION
1				ISSUE FOR PRODUCTION
2				ISSUE FOR PRODUCTION
3				ISSUE FOR PRODUCTION
4				ISSUE FOR PRODUCTION